

**UNIC HYDRAULIC CRANE**

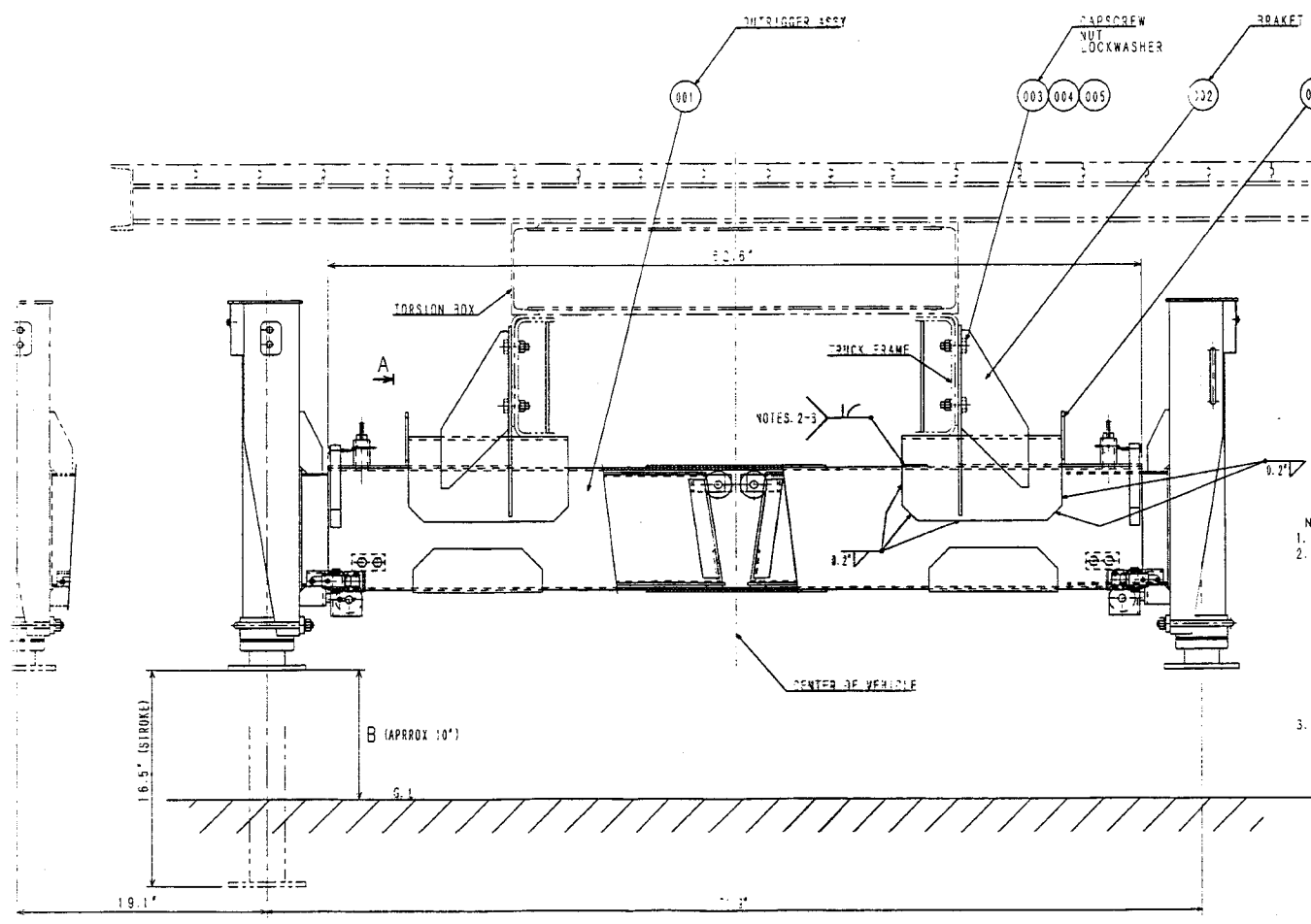
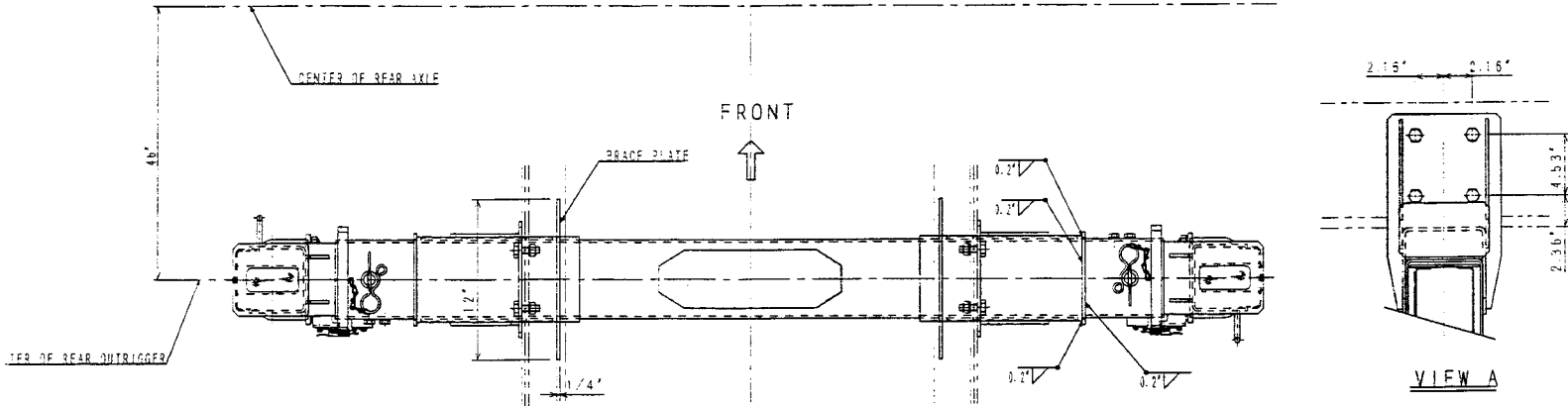
**MOUNTING INSTRUCTION**

**800 SERIES**

**FURUKAWA UNIC CORPORATION**

REAR OUTRIGGER ASSEMBLY

QTY	PART DESCRIPTION	QTY
1	OUTRIGGER ASSY	1
1	BRACKET	1
2	CAPSCREW #16x50	2
2	NUT #16	2
2	LOCKWASHER #16	2
1	PLATE	1



- NOTES
1. Use a welding rod for high tension steel plate.
  2. (Mounting procedures)
    - 2-1). Attach bracket 005 to the truck frame with capscrow 003, nut 004, and lockwasher 005.
    - 2-2). Adjust the outrigger ass'y to the position B (measuring approx. 10 inches) as illustrated in the figure on the left and weld it securely to bracket 005, according to the welding instructions.
    - 2-3). Weld plate 006 securely to bracket 005, and outrigger ass'y 001, according to the welding instructions. Weld as much as you can, (both sides).
  3. Procure a suitable steel plate fitting the inside dimensions of truck frame on the spot for the brace plate.

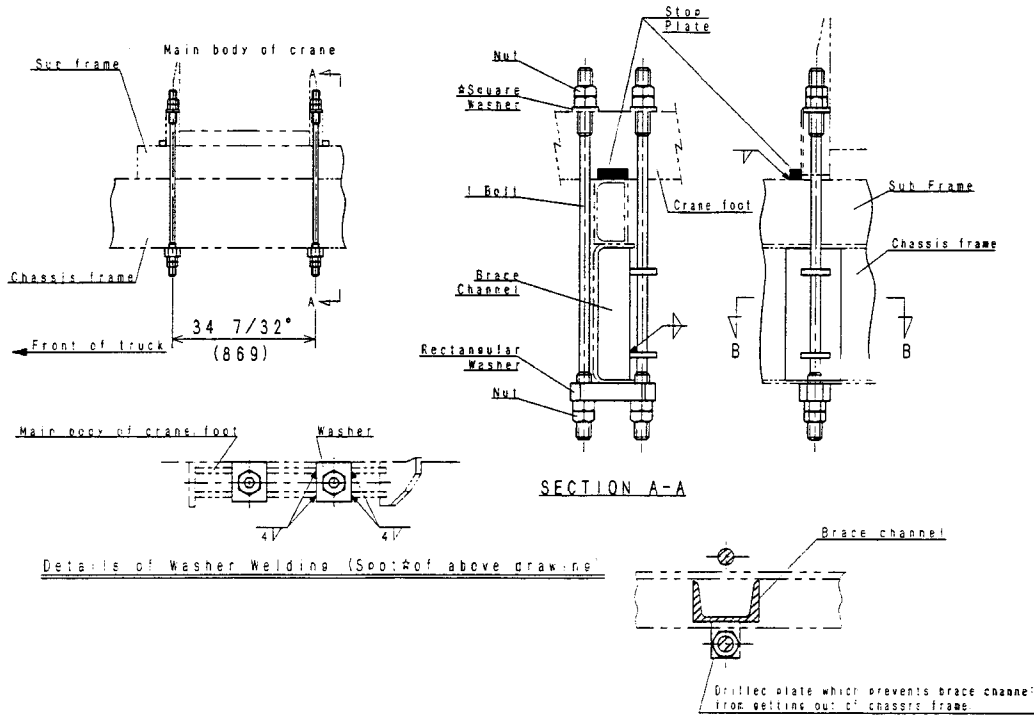
REAR VIEW





"Before mounting", carefully refer to the contents of these drawings and general cautions for mounting.

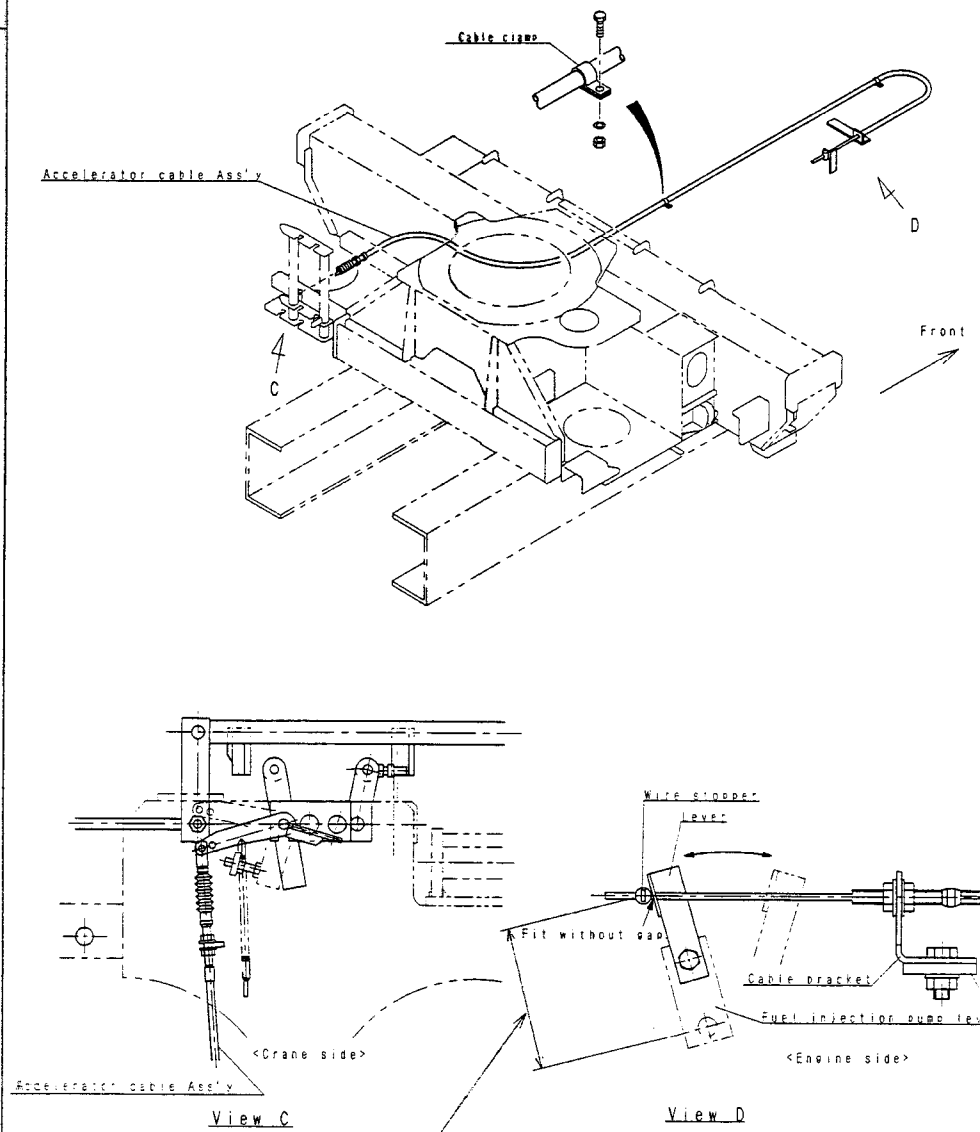
① MOUNTING OF CRANE BODY



- NOTES**
1. In tightening system using install bolts as illustrated above, attach a suitable article to prevent the chassis frame from being deformed. Do not attach the anti-deformation article to the chassis frame by welding.
  2. Weld the square washer on the crane foot to the crane foot after the install bolts have been tightened.
  3. Secure each install bolt by using double-nut tightening system at its both ends.
  4. After the crane has been tightened with the install bolts, put the stopper plates (4 pieces) on the sides of crane foot and weld the plates to the sub-frame to prevent the crane-mounted vehicle from moving forward and backward.

- REFERENCE**
- Recommended Install Bolts: 1 3/16" M30<sup>mm</sup> SCM440H.
  - Recommended Install Nuts: M30<sup>mm</sup> S20C.
  - Drilled Square Washers for Top Nuts: 65x70xt12 φ31 SS41.
  - Drilled Rectangular Washer for Lower Nuts: 80x190xt40 2-φ32.

② MOUNTING OF ACCELERATOR CABLE



Determine the distance between the center of injection pump lever and the accelerator cable so that desired engine speed can be obtained by operating control lever on the crane and the control lever can make a smooth movement.

- NOTES**
- Attach the accelerator cable not to obstruct the accelerator pedal for travelling vehicle.

**FURUKAWA UNIC Corporation**