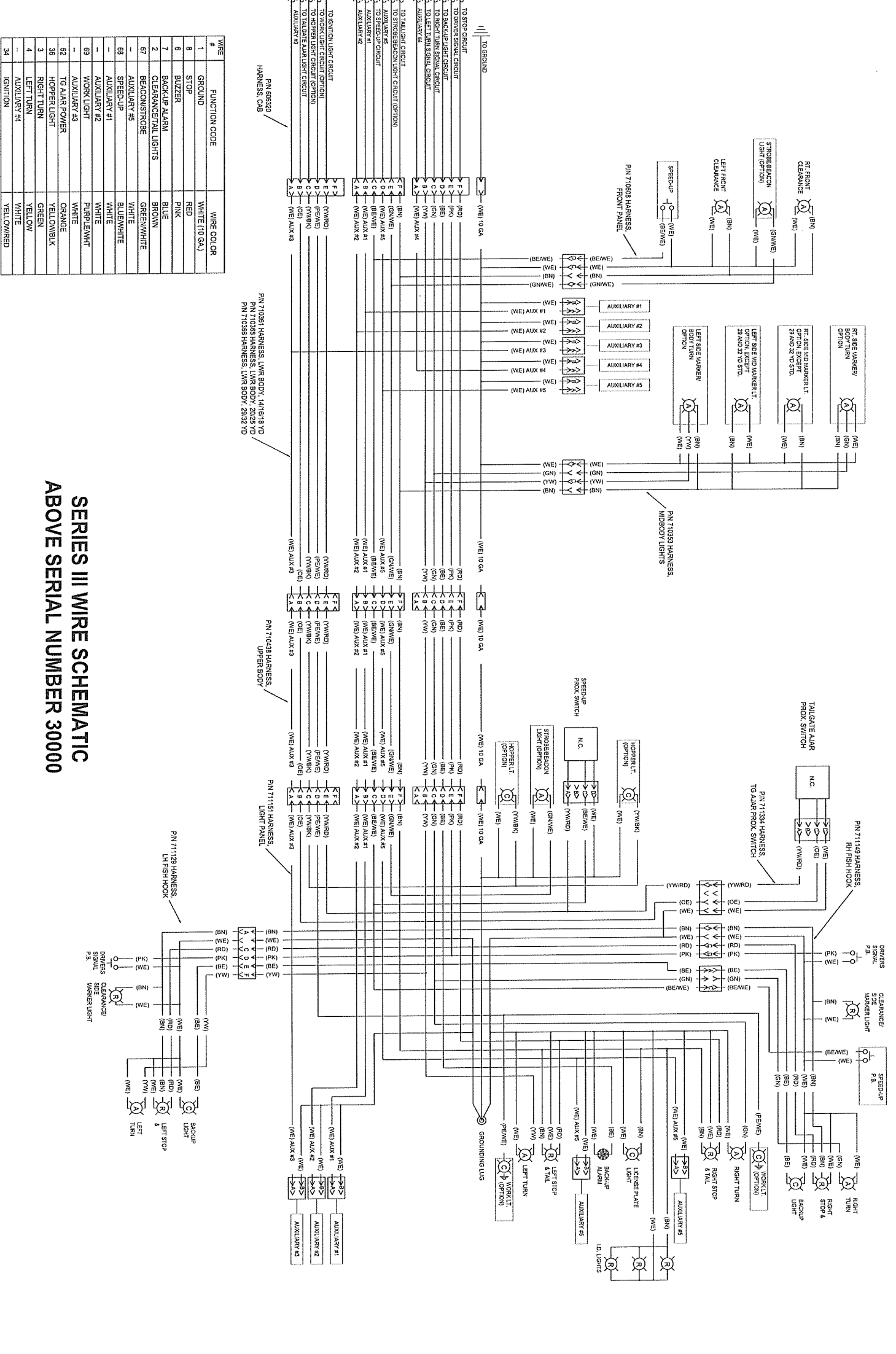


CHASSIS TO BODY ELECTRICAL INTERFACE

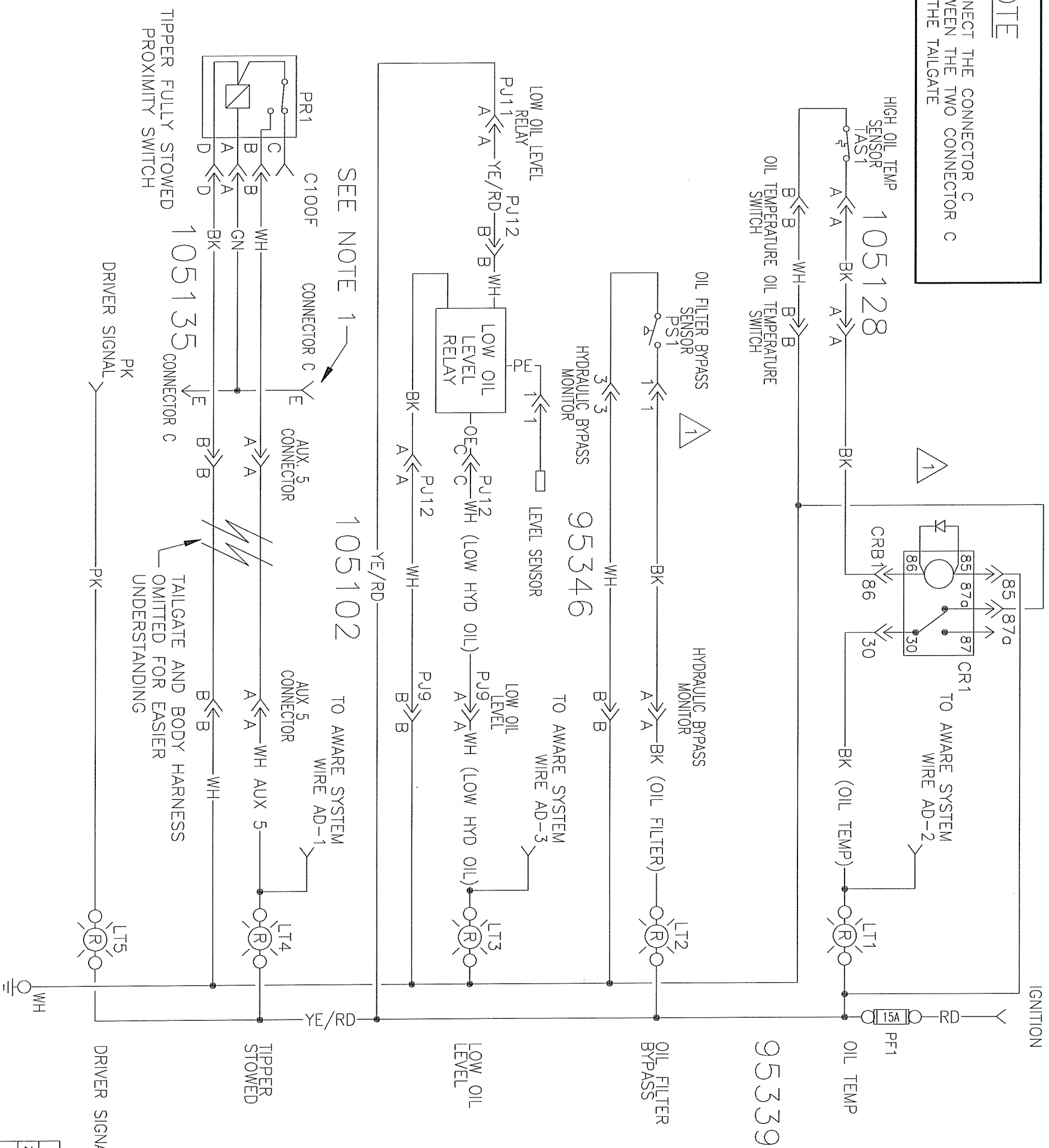


WIRE #	FUNCTION CODE	WIRE COLOR
1	GROUND	WHITE (10 GA)
8	STOP	RED
6	BZZER	PINK
7	BACKUP ALARM	BLUE
2	CLEARANCE LIGHTS	BROWN
67	BEACONSTROBE	GREEN/WHITE
68	AUXILIARY #3	WHITE
69	AUXILIARY #1	BLUE/WHITE
69	AUXILIARY #2	WHITE
62	WORK LIGHT	PURPLE/WHITE
62	TG ALARM POWER	ORANGE
36	HOPPER LIGHT	YELLOW/BLACK
3	RIGHT TURN	GREEN
4	LEFT TURN	YELLOW
...
34	IGNITION	YELLOW/RED

SERIES III WIRE SCHEMATIC
ABOVE SERIAL NUMBER 30000

NOTE

1) CONNECT THE CONNECTOR C BETWEEN THE TWO CONNECTOR C ON THE TAILGATE

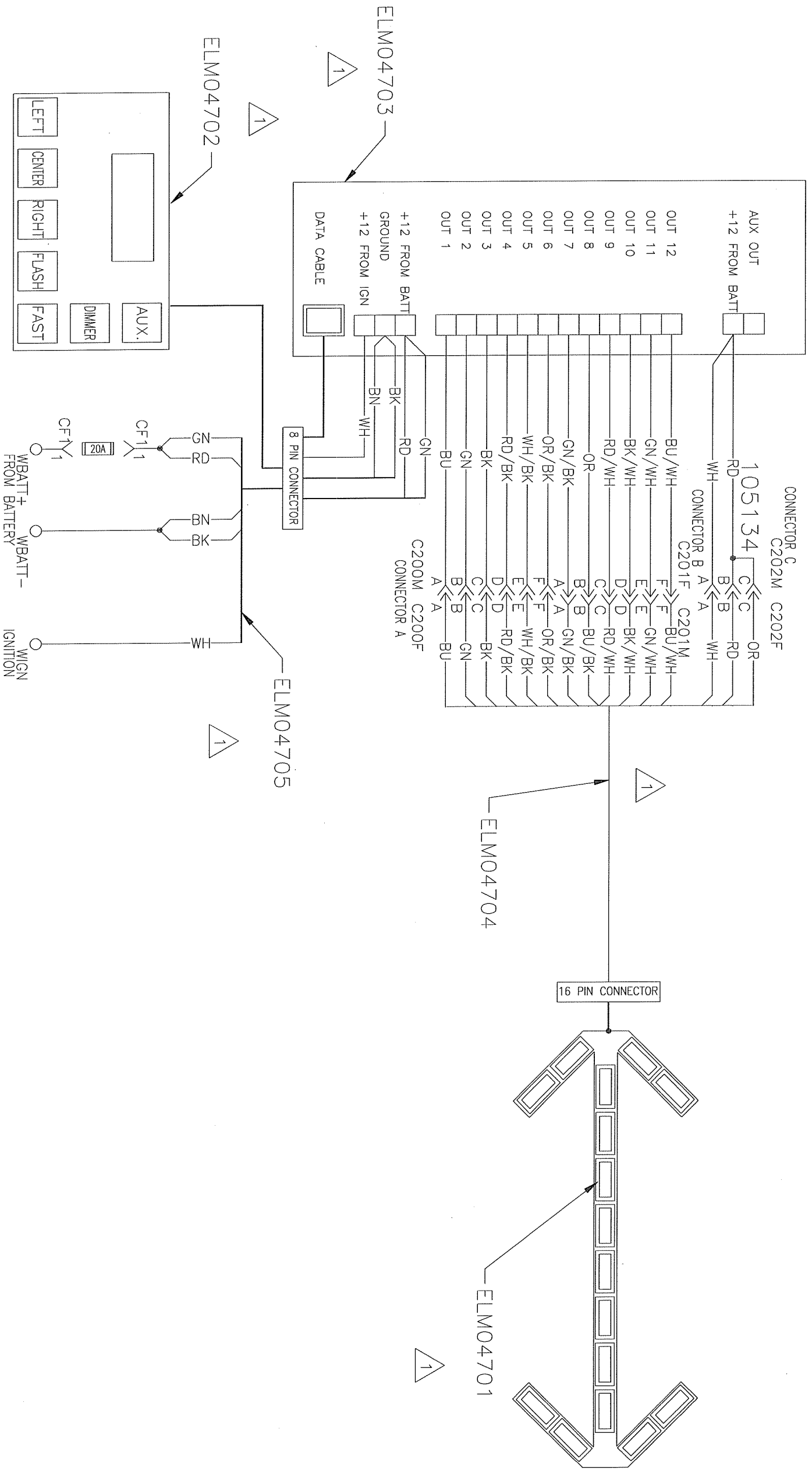


SEE NOTE 1

TIPPER FULLY STOWED PROXIMITY SWITCH

TAILGATE AND BODY HARNESS OMITTED FOR EASIER UNDERSTANDING

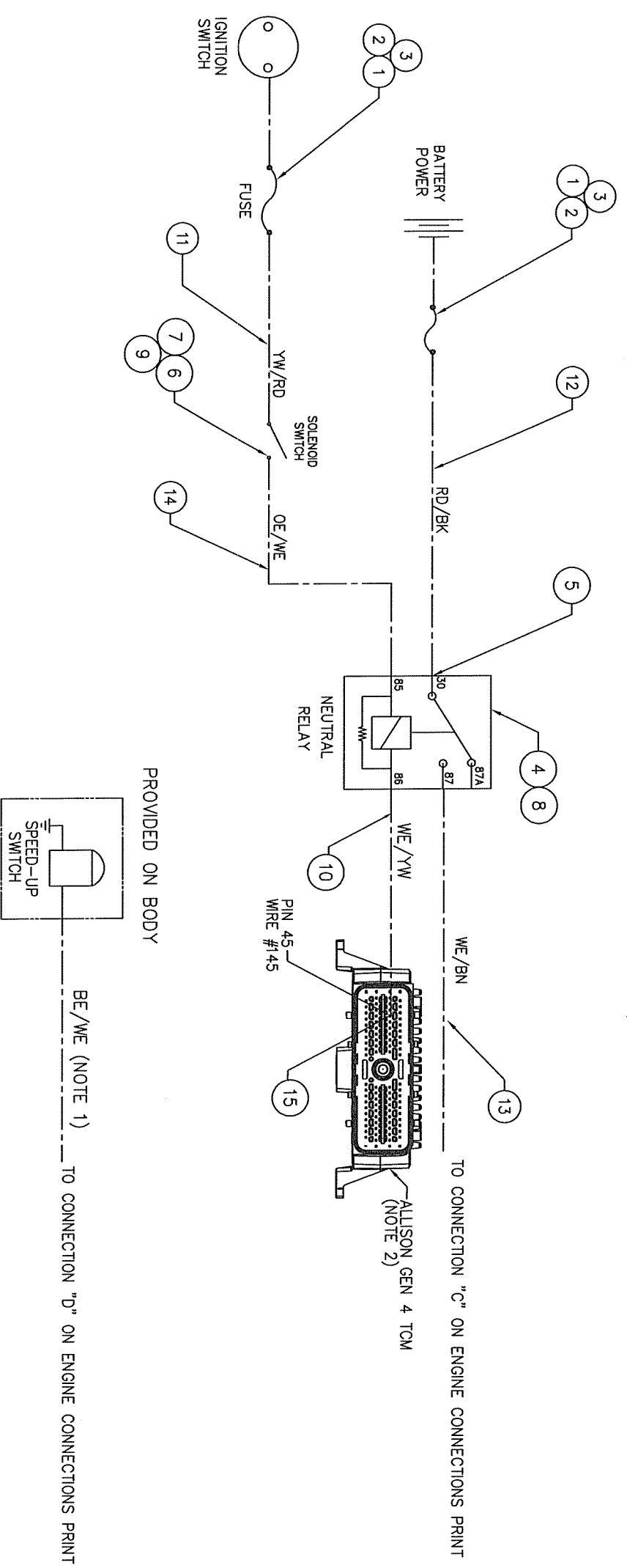
ZONE	LET	INVERTER RELAY ADDED	2008-07-08	S. C.	E. O.
1	LET	REVISION	DATE	DES	VER
LABRIE ENVIRONNEMENTAL GROUP					
DRAFTER	VER	DATE OF DRAWING	DATE OF DRAWING	VER	APP
S. COLLARD	M.L.	2008-05-22	2008-07-08		A3
TITLE			DRAWING NO		
REAR LOADER			95338		
WARNING LIGHTS SCHEMATIC			SHEET 1 OF 1		



ZONE	LET	1	WIRE COLOR CHANGED	2008-03-06	A.M.	S.C.
			REVISION			
LABRIE ENVIRONNEMENTAL GROUP						
DRAFTER	VER	VER DATE	DATE OF DRAWING			
S. COLLARD	M.M.	2008-02-28	2008-02-27			A3
TITLE			DRAWING NO			
REAR LOADER			105133			
INSTALLATION SCHEMATIC						
ARROW BAR ELM04700						
			SHEET	1 OF 1		

NEW RELEASE

item	qty	No. Lbrrie	Description	No. Leach	wt
1	2	ELF00060	FUSE 15 AMP	103159	
2	2	ELF00304	IN-LINE FUSE HOLDER	103157	
3	3	ELT01850	SPLICE-BUTT PLASTI-GRIP #14-16	100413	
4	1	ELR00820	12V SPDT RELAY	102118	
5	4	ELT01860	TERMINAL FEMALE QUICK-SLIDE	38260	
6	1	ELI00805	TOGGLE SWITCH	SK-2092	
7	1	104541	DECAL, SOLENOID ON/OFF	109059-01	
8	1	104016	DECAL, NEUTRAL	108694	
9	2	ELT01499	TERMINAL RING,#14-#16,HEAT SHRINK	16247	
10	10	105024	14 GAGE WHITE/YELLOW WIRE	1972-0129A	
11	6	105028	#14 GAGE YELLOW/RED WIRE	1972-0136A	
12	6	105013	#14 GA RED/BLACK TENSION WIRE	1972-0108A	
13	1	105023	WIRE, 14 GA. WHITE/BROWN	1972-0128A	
14	6	105022	#14 GA. ORANGE/WHITE TENSION	1972-0127A	
15	1	ELT04125	TERMINAL, SOCKET, PACKARD	602837	



- NOTES:
- 1) USE WIRES SUPPLIED IN CHASSIS HARNESS WHEN AVAILABLE.
 - 2) CHECK TRANSMISSION PROGRAMMING PROCEDURE (772598) TO ENSURE THAT SIGNAL 145 IS ACTIVATED IN NEUTRAL ONLY

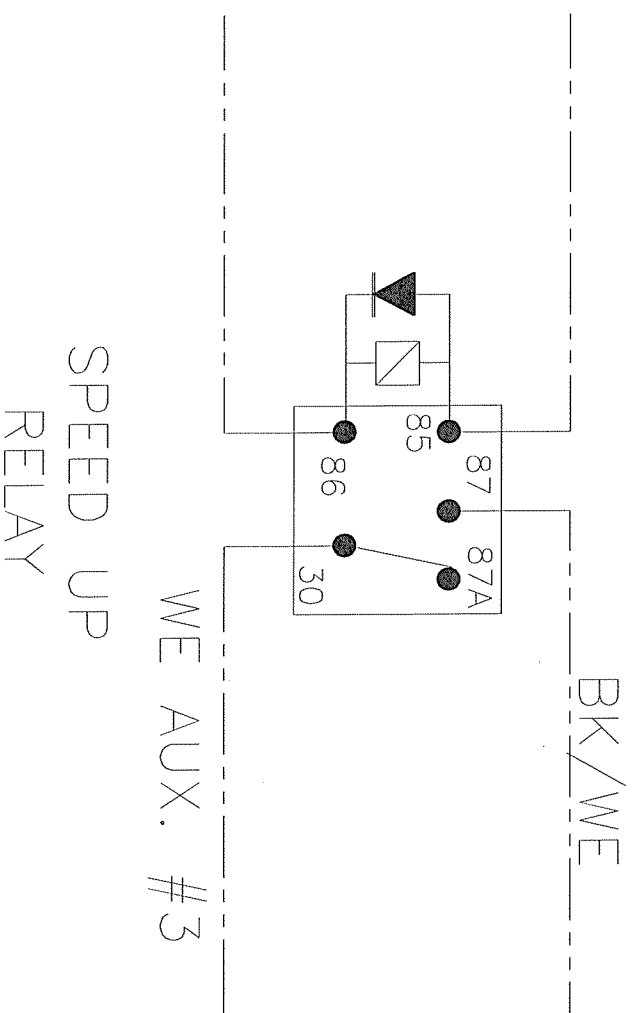
TELEVISIONS 0.000, 0.015 0.030, 0.045 0.060, 0.075 0.090, 0.105 0.120, 0.135 0.150, 0.165 0.180, 0.195 0.210, 0.225 0.240, 0.255 0.270, 0.285 0.300, 0.315 0.330, 0.345 0.360, 0.375 0.390, 0.405 0.420, 0.435 0.450, 0.465 0.480, 0.495 0.510, 0.525 0.540, 0.555 0.570, 0.585 0.600, 0.615 0.630, 0.645 0.660, 0.675 0.690, 0.705 0.720, 0.735 0.750, 0.765 0.780, 0.795 0.810, 0.825 0.840, 0.855 0.870, 0.885 0.900, 0.915 0.930, 0.945 0.960, 0.975 0.990, 1.005 1.020, 1.035 1.050, 1.065 1.080, 1.095 1.110, 1.125 1.140, 1.155 1.170, 1.185 1.200, 1.215 1.230, 1.245 1.260, 1.275 1.290, 1.305 1.320, 1.335 1.350, 1.365 1.380, 1.395 1.410, 1.425 1.440, 1.455 1.470, 1.485 1.500, 1.515 1.530, 1.545 1.560, 1.575 1.590, 1.605 1.620, 1.635 1.650, 1.665 1.680, 1.695 1.710, 1.725 1.740, 1.755 1.770, 1.785 1.800, 1.815 1.830, 1.845 1.860, 1.875 1.890, 1.905 1.920, 1.935 1.950, 1.965 1.980, 1.995 2.000, 2.015 2.040, 2.055 2.070, 2.085 2.100, 2.115 2.130, 2.145 2.160, 2.175 2.190, 2.205 2.220, 2.235 2.250, 2.265 2.280, 2.295 2.310, 2.325 2.340, 2.355 2.370, 2.385 2.400, 2.415 2.430, 2.445 2.460, 2.475 2.490, 2.505 2.520, 2.535 2.550, 2.565 2.580, 2.595 2.610, 2.625 2.640, 2.655 2.670, 2.685 2.700, 2.715 2.730, 2.745 2.760, 2.775 2.790, 2.805 2.820, 2.835 2.850, 2.865 2.880, 2.895 2.910, 2.925 2.940, 2.955 2.970, 2.985 3.000, 3.015 3.040, 3.055 3.070, 3.085 3.100, 3.115 3.130, 3.145 3.160, 3.175 3.190, 3.205 3.220, 3.235 3.250, 3.265 3.280, 3.295 3.310, 3.325 3.340, 3.355 3.370, 3.385 3.400, 3.415 3.430, 3.445 3.460, 3.475 3.490, 3.505 3.520, 3.535 3.550, 3.565 3.580, 3.595 3.610, 3.625 3.640, 3.655 3.670, 3.685 3.700, 3.715 3.730, 3.745 3.760, 3.775 3.790, 3.805 3.820, 3.835 3.850, 3.865 3.880, 3.895 3.910, 3.925 3.940, 3.955 3.970, 3.985 4.000, 4.015 4.040, 4.055 4.070, 4.085 4.100, 4.115 4.130, 4.145 4.160, 4.175 4.190, 4.205 4.220, 4.235 4.250, 4.265 4.280, 4.295 4.310, 4.325 4.340, 4.355 4.370, 4.385 4.400, 4.415 4.430, 4.445 4.460, 4.475 4.490, 4.505 4.520, 4.535 4.550, 4.565 4.580, 4.595 4.610, 4.625 4.640, 4.655 4.670, 4.685 4.700, 4.715 4.730, 4.745 4.760, 4.775 4.790, 4.805 4.820, 4.835 4.850, 4.865 4.880, 4.895 4.910, 4.925 4.940, 4.955 4.970, 4.985 5.000, 5.015 5.040, 5.055 5.070, 5.085 5.100, 5.115 5.130, 5.145 5.160, 5.175 5.190, 5.205 5.220, 5.235 5.250, 5.265 5.280, 5.295 5.310, 5.325 5.340, 5.355 5.370, 5.385 5.400, 5.415 5.430, 5.445 5.460, 5.475 5.490, 5.505 5.520, 5.535 5.550, 5.565 5.580, 5.595 5.610, 5.625 5.640, 5.655 5.670, 5.685 5.700, 5.715 5.730, 5.745 5.760, 5.775 5.790, 5.805 5.820, 5.835 5.850, 5.865 5.880, 5.895 5.910, 5.925 5.940, 5.955 5.970, 5.985 6.000, 6.015 6.040, 6.055 6.070, 6.085 6.100, 6.115 6.130, 6.145 6.160, 6.175 6.190, 6.205 6.220, 6.235 6.250, 6.265 6.280, 6.295 6.310, 6.325 6.340, 6.355 6.370, 6.385 6.400, 6.415 6.430, 6.445 6.460, 6.475 6.490, 6.505 6.520, 6.535 6.550, 6.565 6.580, 6.595 6.610, 6.625 6.640, 6.655 6.670, 6.685 6.700, 6.715 6.730, 6.745 6.760, 6.775 6.790, 6.805 6.820, 6.835 6.850, 6.865 6.880, 6.895 6.910, 6.925 6.940, 6.955 6.970, 6.985 7.000, 7.015 7.040, 7.055 7.070, 7.085 7.100, 7.115 7.130, 7.145 7.160, 7.175 7.190, 7.205 7.220, 7.235 7.250, 7.265 7.280, 7.295 7.310, 7.325 7.340, 7.355 7.370, 7.385 7.400, 7.415 7.430, 7.445 7.460, 7.475 7.490, 7.505 7.520, 7.535 7.550, 7.565 7.580, 7.595 7.610, 7.625 7.640, 7.655 7.670, 7.685 7.700, 7.715 7.730, 7.745 7.760, 7.775 7.790, 7.805 7.820, 7.835 7.850, 7.865 7.880, 7.895 7.910, 7.925 7.940, 7.955 7.970, 7.985 8.000, 8.015 8.040, 8.055 8.070, 8.085 8.100, 8.115 8.130, 8.145 8.160, 8.175 8.190, 8.205 8.220, 8.235 8.250, 8.265 8.280, 8.295 8.310, 8.325 8.340, 8.355 8.370, 8.385 8.400, 8.415 8.430, 8.445 8.460, 8.475 8.490, 8.505 8.520, 8.535 8.550, 8.565 8.580, 8.595 8.610, 8.625 8.640, 8.655 8.670, 8.685 8.700, 8.715 8.730, 8.745 8.760, 8.775 8.790, 8.805 8.820, 8.835 8.850, 8.865 8.880, 8.895 8.910, 8.925 8.940, 8.955 8.970, 8.985 9.000, 9.015 9.040, 9.055 9.070, 9.085 9.100, 9.115 9.130, 9.145 9.160, 9.175 9.190, 9.205 9.220, 9.235 9.250, 9.265 9.280, 9.295 9.310, 9.325 9.340, 9.355 9.370, 9.385 9.400, 9.415 9.430, 9.445 9.460, 9.475 9.490, 9.505 9.520, 9.535 9.550, 9.565 9.580, 9.595 9.610, 9.625 9.640, 9.655 9.670, 9.685 9.700, 9.715 9.730, 9.745 9.760, 9.775 9.790, 9.805 9.820, 9.835 9.850, 9.865 9.880, 9.895 9.910, 9.925 9.940, 9.955 9.970, 9.985 10.000, 10.015 10.040, 10.055 10.070, 10.085 10.100, 10.115 10.130, 10.145 10.160, 10.175 10.190, 10.205 10.220, 10.235 10.250, 10.265 10.280, 10.295 10.310, 10.325 10.340, 10.355 10.370, 10.385 10.400, 10.415 10.430, 10.445 10.460, 10.475 10.490, 10.505 10.520, 10.535 10.550, 10.565 10.580, 10.595 10.610, 10.625 10.640, 10.655 10.670, 10.685 10.700, 10.715 10.730, 10.745 10.760, 10.775 10.790, 10.805 10.820, 10.835 10.850, 10.865 10.880, 10.895 10.910, 10.925 10.940, 10.955 10.970, 10.985 11.000, 11.015 11.040, 11.055 11.070, 11.085 11.100, 11.115 11.130, 11.145 11.160, 11.175 11.190, 11.205 11.220, 11.235 11.250, 11.265 11.280, 11.295 11.310, 11.325 11.340, 11.355 11.370, 11.385 11.400, 11.415 11.430, 11.445 11.460, 11.475 11.490, 11.505 11.520, 11.535 11.550, 11.565 11.580, 11.595 11.610, 11.625 11.640, 11.655 11.670, 11.685 11.700, 11.715 11.730, 11.745 11.760, 11.775 11.790, 11.805 11.820, 11.835 11.850, 11.865 11.880, 11.895 11.910, 11.925 11.940, 11.955 11.970, 11.985 12.000, 12.015 12.040, 12.055 12.070, 12.085 12.100, 12.115 12.130, 12.145 12.160, 12.175 12.190, 12.205 12.220, 12.235 12.250, 12.265 12.280, 12.295 12.310, 12.325 12.340, 12.355 12.370, 12.385 12.400, 12.415 12.430, 12.445 12.460, 12.475 12.490, 12.505 12.520, 12.535 12.550, 12.565 12.580, 12.595 12.610, 12.625 12.640, 12.655 12.670, 12.685 12.700, 12.715 12.730, 12.745 12.760, 12.775 12.790, 12.805 12.820, 12.835 12.850, 12.865 12.880, 12.895 12.910, 12.925 12.940, 12.955 12.970, 12.985 13.000, 13.015 13.040, 13.055 13.070, 13.085 13.100, 13.115 13.130, 13.145 13.160, 13.175 13.190, 13.205 13.220, 13.235 13.250, 13.265 13.280, 13.295 13.310, 13.325 13.340, 13.355 13.370, 13.385 13.400, 13.415 13.430, 13.445 13.460, 13.475 13.490, 13.505 13.520, 13.535 13.550, 13.565 13.580, 13.595 13.610, 13.625 13.640, 13.655 13.670, 13.685 13.700, 13.715 13.730, 13.745 13.760, 13.775 13.790, 13.805 13.820, 13.835 13.850, 13.865 13.880, 13.895 13.910, 13.925 13.940, 13.955 13.970, 13.985 14.000, 14.015 14.040, 14.055 14.070, 14.085 14.100, 14.115 14.130, 14.145 14.160, 14.175 14.190, 14.205 14.220, 14.235 14.250, 14.265 14.280, 14.295 14.310, 14.325 14.340, 14.355 14.370, 14.385 14.400, 14.415 14.430, 14.445 14.460, 14.475 14.490, 14.505 14.520, 14.535 14.550, 14.565 14.580, 14.595 14.610, 14.625 14.640, 14.655 14.670, 14.685 14.700, 14.715 14.730, 14.745 14.760, 14.775 14.790, 14.805 14.820, 14.835 14.850, 14.865 14.880, 14.895 14.910, 14.925 14.940, 14.955 14.970, 14.985 15.000, 15.015 15.040, 15.055 15.070, 15.085 15.100, 15.115 15.130, 15.145 15.160, 15.175 15.190, 15.205 15.220, 15.235 15.250, 15.265 15.280, 15.295 15.310, 15.325 15.340, 15.355 15.370, 15.385 15.400, 15.415 15.430, 15.445 15.460, 15.475 15.490, 15.505 15.520, 15.535 15.550, 15.565 15.580, 15.595 15.610, 15.625 15.640, 15.655 15.670, 15.685 15.700, 15.715 15.730, 15.745 15.760, 15.775 15.790, 15.805 15.820, 15.835 15.850, 15.865 15.880, 15.895 15.910, 15.925 15.940, 15.955 15.970, 15.985 16.000, 16.015 16.040, 16.055 16.070, 16.085 16.100, 16.115 16.130, 16.145 16.160, 16.175 16.190, 16.205 16.220, 16.235 16.250, 16.265 16.280, 16.295 16.310, 16.325 16.340, 16.355 16.370, 16.385 16.400, 16.415 16.430, 16.445 16.460, 16.475 16.490, 16.505 16.520, 16.535 16.550, 16.565 16.580, 16.595 16.610, 16.625 16.640, 16.655 16.670, 16.685 16.700, 16.715 16.730, 16.745 16.760, 16.775 16.790, 16.805 16.820, 16.835 16.850, 16.865 16.880, 16.895 16.910, 16.925 16.940, 16.955 16.970, 16.985 17.000, 17.015 17.040, 17.055 17.070, 17.085 17.100, 17.115 17.130, 17.145 17.160, 17.175 17.190, 17.205 17.220, 17.235 17.250, 17.265 17.280, 17.295 17.310, 17.325 17.340, 17.355 17.370, 17.385 17.400, 17.415 17.430, 17.445 17.460, 17.475 17.490, 17.505 17.520, 17.535 17.550, 17.565 17.580, 17.595 17.610, 17.625 17.640, 17.655 17.670, 17.685 17.700, 17.715 17.730, 17.745 17.760, 17.775 17.790, 17.805 17.820, 17.835 17.850, 17.865 17.880, 17.895 17.910, 17.925 17.940, 17.955 17.970, 17.985 18.000, 18.015 18.040, 18.055 18.070, 18.085 18.100, 18.115 18.130, 18.145 18.160, 18.175 18.190, 18.205 18.220, 18.235 18.250, 18.265 18.280, 18.295 18.310, 18.325 18.340, 18.355 18.370, 18.385 18.400, 18.415 18.430, 18.445 18.460, 18.475 18.490, 18.505 18.520, 18.535 18.550, 18.565 18.580, 18.595 18.610, 18.625 18.640, 18.655 18.670, 18.685 18.700, 18.715 18.730, 18.745 18.760, 18.775 18.790, 18.805 18.820, 18.835 18.850, 18.865 18.880, 18.895 18.910, 18.925 18.940, 18.955 18.970, 18.985 19.000, 19.015 19.040, 19.055 19.070, 19.085 19.100, 19.115 19.130, 19.145 19.160, 19.175 19.190, 19.205 19.220, 19.235 19.250, 19.265 19.280, 19.295 19.310, 19.325 19.340, 19.355 19.370, 19.385 19.400, 19.415 19.430, 19.445 19.460, 19.475 19.490, 19.505 19.520, 19.535 19.550, 19.565 19.580, 19.595 19.610, 19.625 19.640, 19.655 19.670, 19.685 19.700, 19.715 19.730, 19.745 19.760, 19.775 19.790, 19.805 19.820, 19.835 19.850, 19.865 19.880, 19.895 19.910, 19.925 19.940, 19.955 19.970, 19.985 20.000, 20.015 20.040, 20.055 20.070, 20.085 20.100, 20.115 20.130, 20.145 20.160, 20.175 20.190, 20.205 20.220, 20.235 20.250, 20.265 20.280, 20.295 20.310, 20.325 20.340, 20.355 20.370, 20.385 20.400, 20.415 20.430, 20.445 20.460, 20.475 20.490, 20.505 20.520, 20.535 20.550, 20.565 20.580, 20.595 20.610, 20.625 20.640, 20.655 20.670, 20.685 20.700, 20.715 20.730, 20.745 20.760, 20.775 20.790, 20.805 20.820, 20.835 20.850, 20.865 20.880, 20.895 20.910, 20.925 20.940, 20.955 20.970, 20.985 21.000, 21.015 21.040, 21.055 21.070, 21.085 21.100, 21.115 21.130, 21.145 21.160, 21.175 21.190, 21.205 21.220, 21.235 21.250, 21.265 21.280, 21.295 21.310, 21.325 21.340, 21.355 21.370,
--

NOTE

- 1) ENGINE ECU IS LOCATED ON LEFT SIDE OF ENGINE. OEM CONNECTOR IS LOCATED ON THE FORWARD HALF OF THE ECU.
- 2) FOR HARNESS UNITS ONLY: USE AUX#3 FOR CONNECTION TO ECU. IF AUX #3 IS ALREADY USED THEN USE AUX #1.
- 3) CONNECTIONS C AND D ARE FOUND ON ENGINE CONTROLS, NEUTRAL INTERLOCK OR BRAKE INTERLOCK PRINT.

TO CONNECTION "C" ON
ENGINE CONTROL PRINT

TO CONNECTION "D" ON
ENGINE CONTROL PRINT



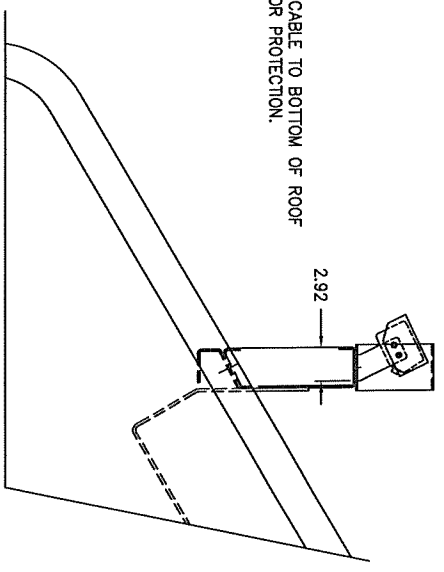
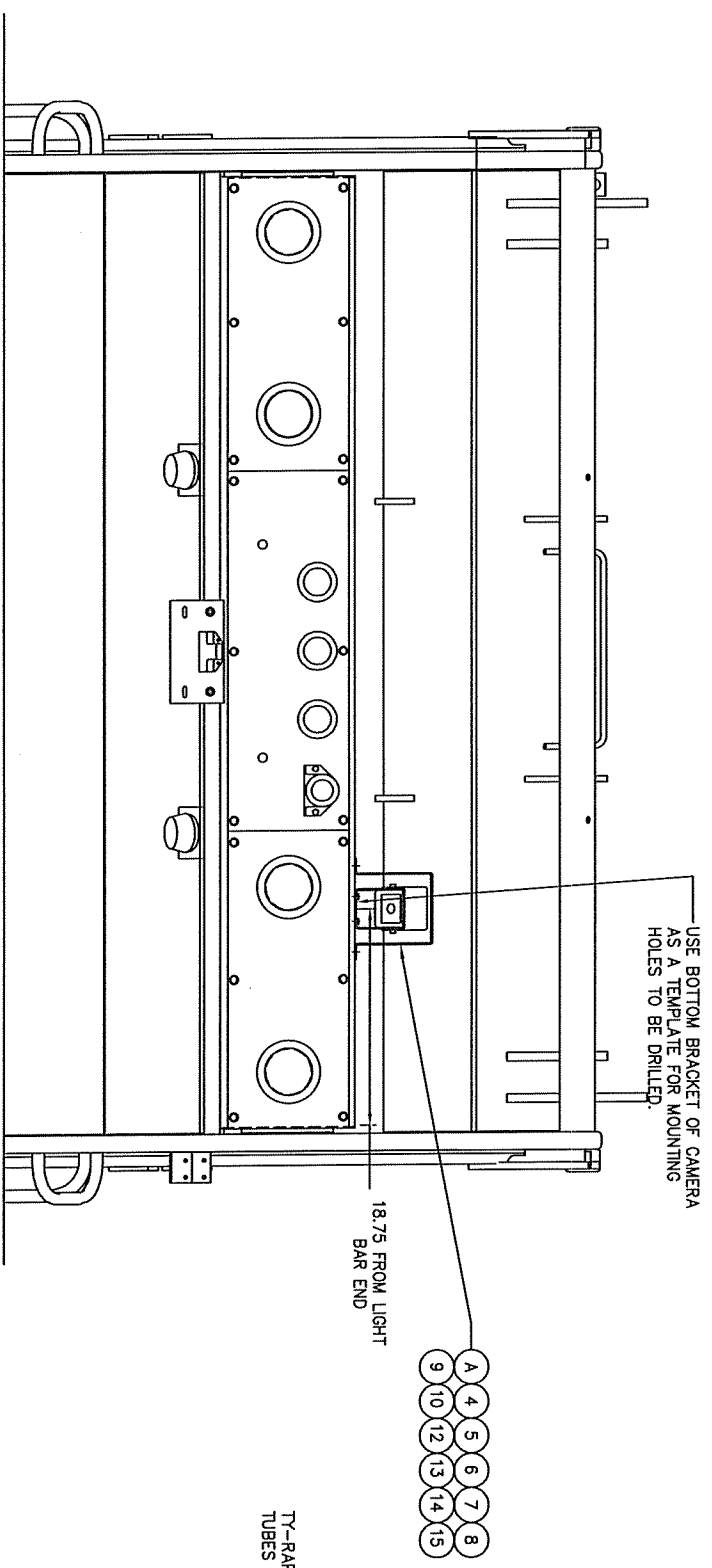
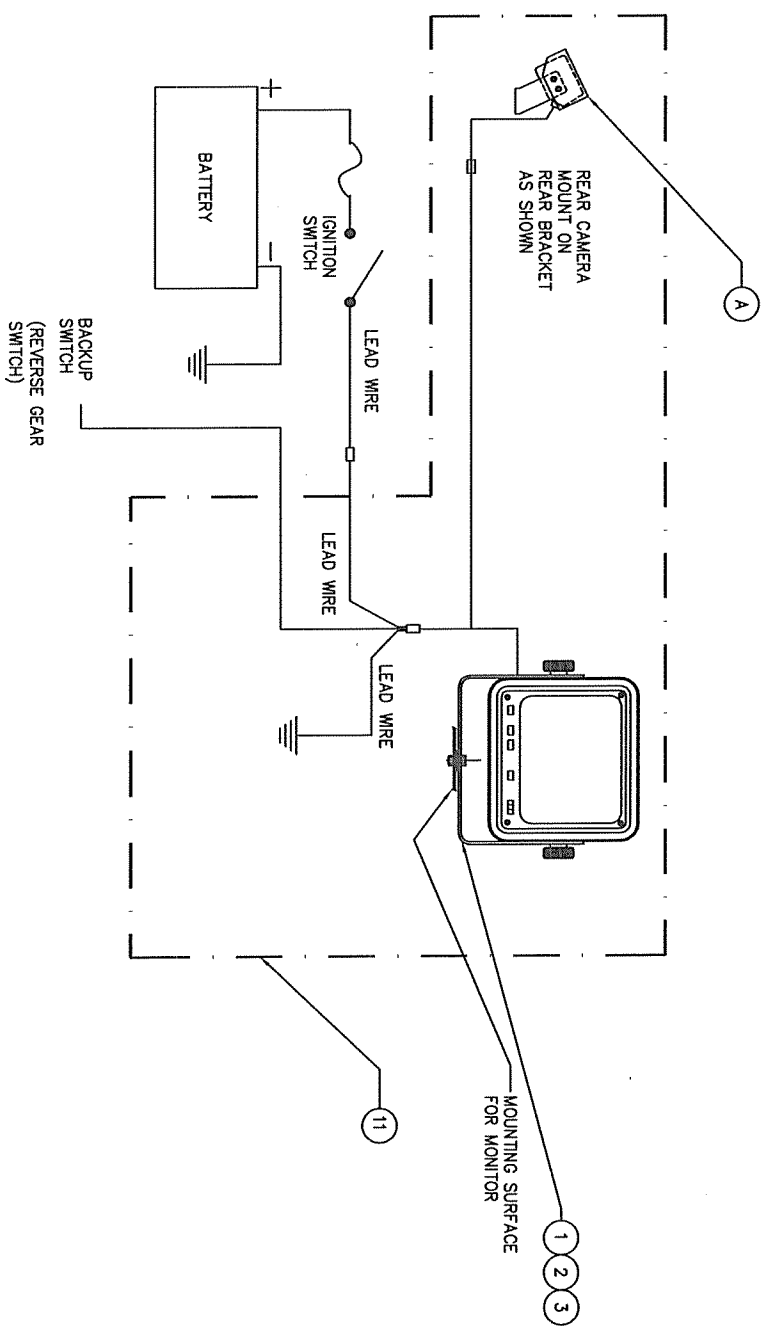
BK/WE
PIN #41 ON ENGINE
OEM CONNECTOR

WE AUX. #3
PIN #18 ON ENGINE
OEM CONNECTOR

SPEED UP
RELAY

ZONE	LET	REVISION	DATE	DES	VER	APP
EQUIPEMENT		LABRIE				
DESS	VER	AD	DATE DU DESSIN			
S. COLLARD			2007-09-30			
TITRE			NO DU DESSIN			
CONNECTIONS, ENGINE			828335			
CUMMINS, ISB,ISC,ISL OR PACCAR						
PX-8 EPA 2007				FEUILLE 1 DE 1		

ECN: 240113 DATE: 02/19/04 USER: BRP
 REVISION F DETAIL
 F1 700361 QTY 1 REPLACED 603040 QTY 1
 F2 UPDATED PART DESCRIPTION

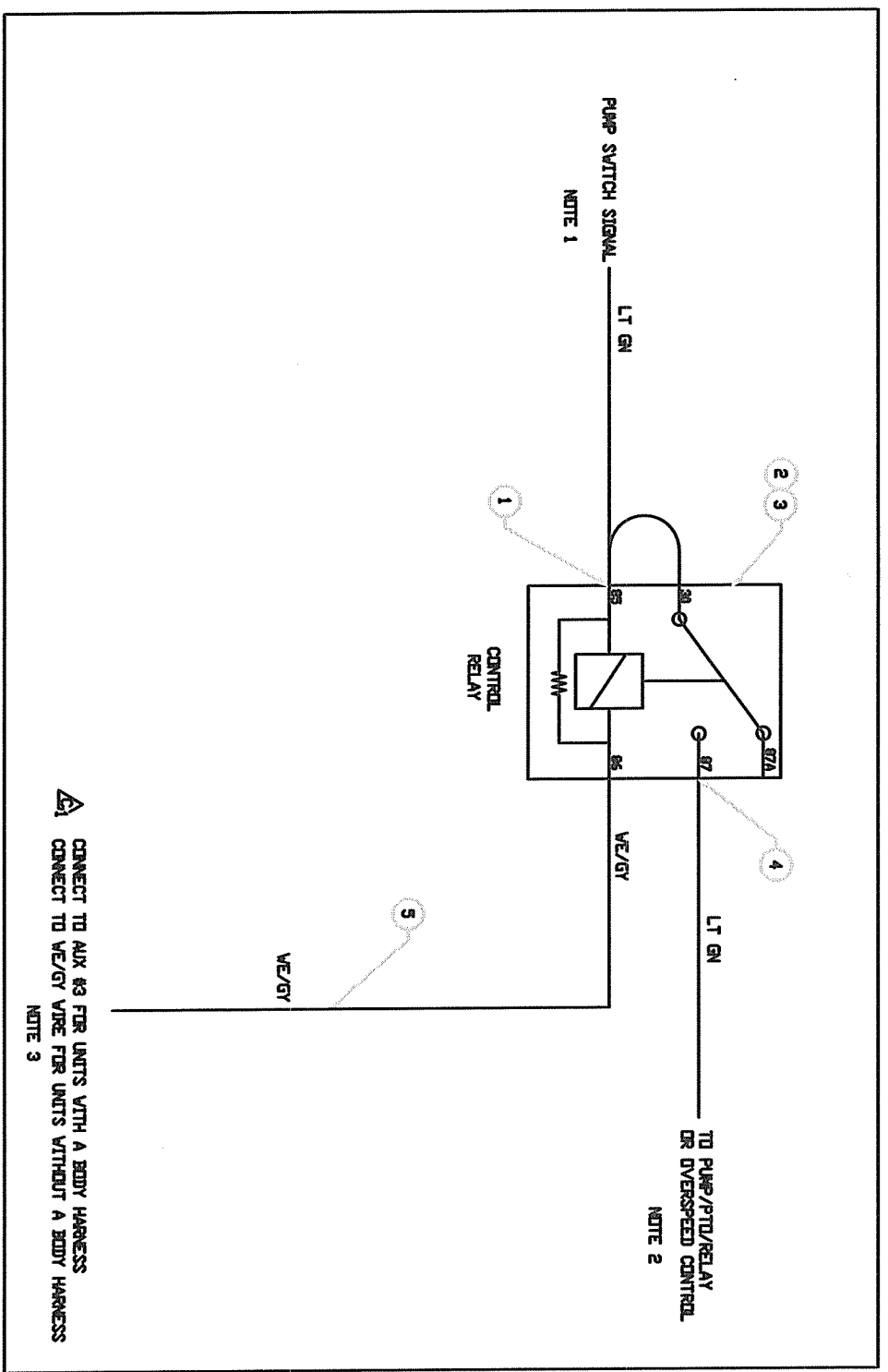


REFERENCE 407132-04-08 & 603036-01

Item	qty	part	Description	matl	wt
1	1	4837-0095A	WEAR SPACER		
2	1	F0980	1/2-13 X 1 1/2 HEX HD CAPSCREW ZINC PLA		
3	1	F3325	1/2-13 HEX NUT ELASTIC STOP ZP		
4	2	F0022	1/4-20 X 3/4 HEX HD CAPSCREW GRADE 5		
5	4	F0009	10-24 X 3/4 HEX HD CAPSCREW		
6	4	F7040	#10 SAE WASHER ZINC PLATED		
7	4	F7725	#10 MEDIUM LOCKWASHER ZINC PLATED		
8	4	F2625	10-24 HEX NUT		
9	12	18034	TY-RAP		
10	1	700361	GUARD, INTEC CAMERA, REAR		
11	1	REF	CAMERA SYSTEM		
12	2	F0190	5/16-18 X 1 1/2 HEX HD CAPSCREW GRADE 5		
13	4	F7175	5/16 FLAT WASHER		
14	2	F2850	5/16 18 HEX NUT		
15	2	F2725	1/4-20 HEX NUT		

TELEPHONE	2737 HARRISON STREET	OSHKOSH, WI 54603-2608
FAX	407099-08	
EMAIL	SALES@LEAGHCOMPANY.COM	
WEBSITE	WWW.LEAGHCOMPANY.COM	
DATE	12/17/96	
BY	ALPHA/BETA/Delta	
SCALE	1/8"	
UNIT	1"	
PROJECT	INSTALL CAMERA SYSTEM	
REV	F2	

Rev#	Qty	Part #	Description	Matl	Qt
1	1	106745	FEMALE SLIDE TERMINAL		
2	1	102118	12V SPDT RELAY		
3	1	108592	MICAL CONTROL		
4	3	38260	TERMINAL FEMALE QUICK-SLIDE		
5	15	1972-0133A	WIRE, 14 GA WHITE/GRY		



- NOTE:
- 1-INSERT CONTROL RELAY & PUMP SHUTOFF WIRES AFTER THE PUMP SWITCH SIGNAL CAN BE TAKEN FROM PUMP CONTROL, NEUTRAL OR BRAKE INTERLOCK. CONDOR SUPPLIED SWITCH WIRE IS UNDER CUSTOMER ACCESS PANEL BETWEEN SEATS. WIRE IS LABELED E12 ON TERMINAL 87 OF RELAY. SPLICE INTO E12 WIRE FROM RELAY END AND RUN TO PUMP/PTD.
 - 2-CONTROL RELAY TO BE LOCATED BEFORE THE PUMP RELAY, PUMP/PTD AND SOLENOID SWITCH. RELAY TO BE INSTALLED PRIOR TO DS CONTROL, U8 AND/OR U2 NO WIRES.
 - 3-BODY AND TAILGATE SWITCHES TO BE WIRED FOR NORMALLY OPEN.

LEAGH COMPANY
 2727 HARRISON STREET, CONROCK, VT 5600-6508
 CONTROL, PUMP/PTD, SHUTOFF SWITCH
 1/1 1"1 506176
 All Readers

<u>MENU:</u> <u>Adjustment,</u> <u>Feature &</u> <u>parameter,</u> <u>onglet</u>	PARAMETRE	VALEUR
ACCELERATOR OPTIONS	ENGINE GOVERNOR TYPE	VARIABLE SPEED
IDLE SPEED ADJUSTMENT	LOW IDLE SPEED ADJUSTMENT	DISABLE
PTO/ REMOTE PTO	ACCELERATOR OVERRIDE	DISABLE
	MAX ENGINE LOAD	500 Lb-Ft
	MAX ENGINE SPEED	1200 RPM
	SWITCH RAMP RATE	1500 RPM/S
	RESUME SWITCH ENGINE SPEED	800 RPM
	SET SWITCH ENGINE SPEED	1200 RPM
	REMOTE PTO	NUMBER SET SPEED
SET SPEED 1		1200 RPM
VEHICULE SPEED	ON HIGHWAY TYPE	ON/OFF HIGHWAY
IDLE SHUTDOWN	IDLE SHUTDOWN	DISABLE

	1	AJOUT IDLE SHUTDOWN	2007-03-29	S.C.		
ZONE	LET	REVISION	DATE	DES	VER	APP
EQUIPEMENT LABRIE						
DESS	M.LABRIE	VER	AQ	DATE DU DESSIN	2003-01-20	A4
TITRE	CL-TS-SF PROGRAMMATION MOTEUR CUMMINS A/POMPE DENISON T6D038			NO DU DESSIN	Z50311	
				FEUILLE	DE	