

PNEUMATIC SYSTEM

EXPERT 2000

PNEUMATIC SYSTEM

EXPERT 2000

Table of contents

7.0	PNEUMATIC SYSTEM	7 -5
7.1	INTRODUCTION	7 -5
7.2	MAIN PNEUMATIC SCHEMATICS	7 -6
7.2.1	LABRIE CAB (Conventional cab and Cab over)	7 -6
7.3	COMINGLE SPLIT BODY PNEUMATIC SCHEMATICS	7 -8
7.3.1	INTERNAL SWING DOOR PNEUMATIC SCHEMATICS	7 -8
7.3.2	DUAL TAILGATE	7 -10

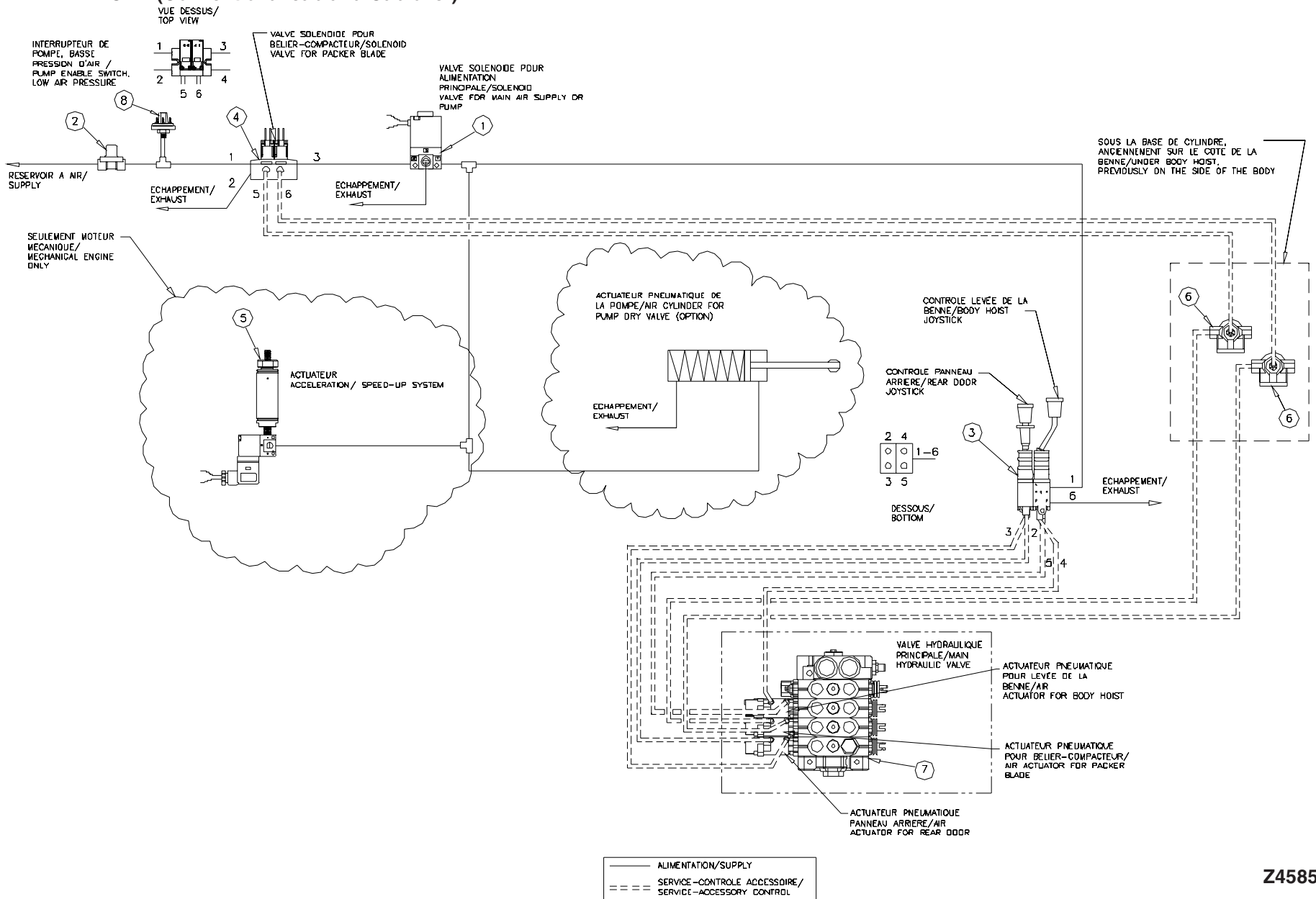
7.0 PNEUMATIC SYSTEM

7.1 INTRODUCTION

This section contains pneumatic system schematics for the Expert 2000 unit. Before searching for parts, identify the type of cab of your unit: cab over or conventional cab. The mounting of some components for the body depends on the type of cab configuration. The comingle units also have special parts related to their special tailgate controls. Verify if you have a dual tailgate configuration or a single tailgate with an internal swing door.

7.2 MAIN PNEUMATIC SCHEMATICS

7.2.1 LABRIE CAB (Conventional cab and Cab over)



Z45853

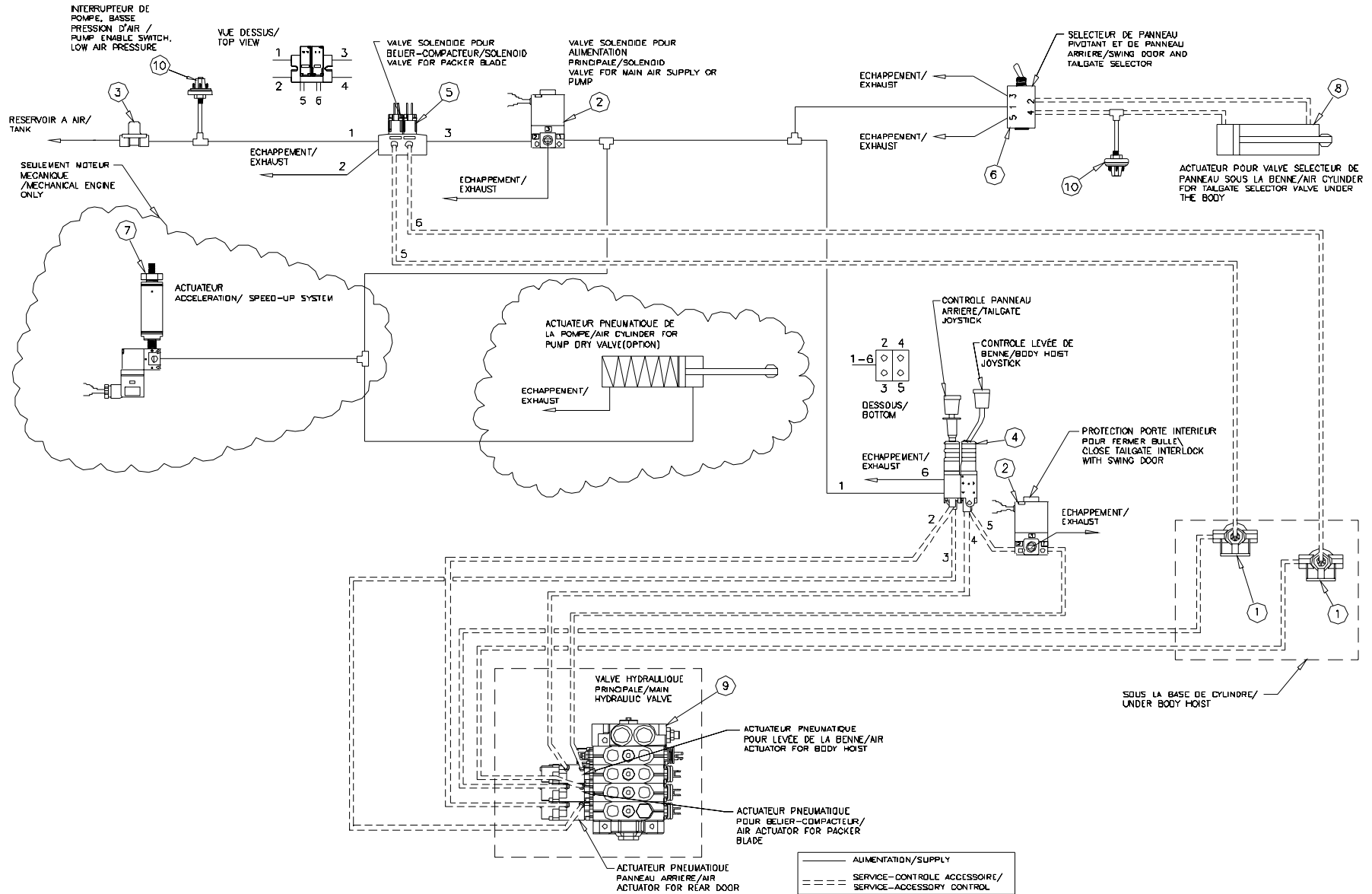
7.2 MAIN PNEUMATIC SCHEMATICS

7.2.1 LABRIE CAB (Conventional cab and Cab over)

No.	Part no.	Description	Qty.
1	PNV01957	Solenoid valve	1
2	PNV02600	Safety valve	1
3	PNJ00110	Dual control lever	1
4	PNV01914	Solenoid valve	1
5	PNC00252	Air cylinder "bimba"	1
6	PNV01100	Quick release valve	2
7	SERIAL #	Main control valve	1
8	PNI00400	Pressure switch	1

7.3 COMINGLE SPLIT BODY PNEUMATIC SCHEMATICS

7.3.1 INTERNAL SWING DOOR PNEUMATIC SCHEMATICS



Z45852

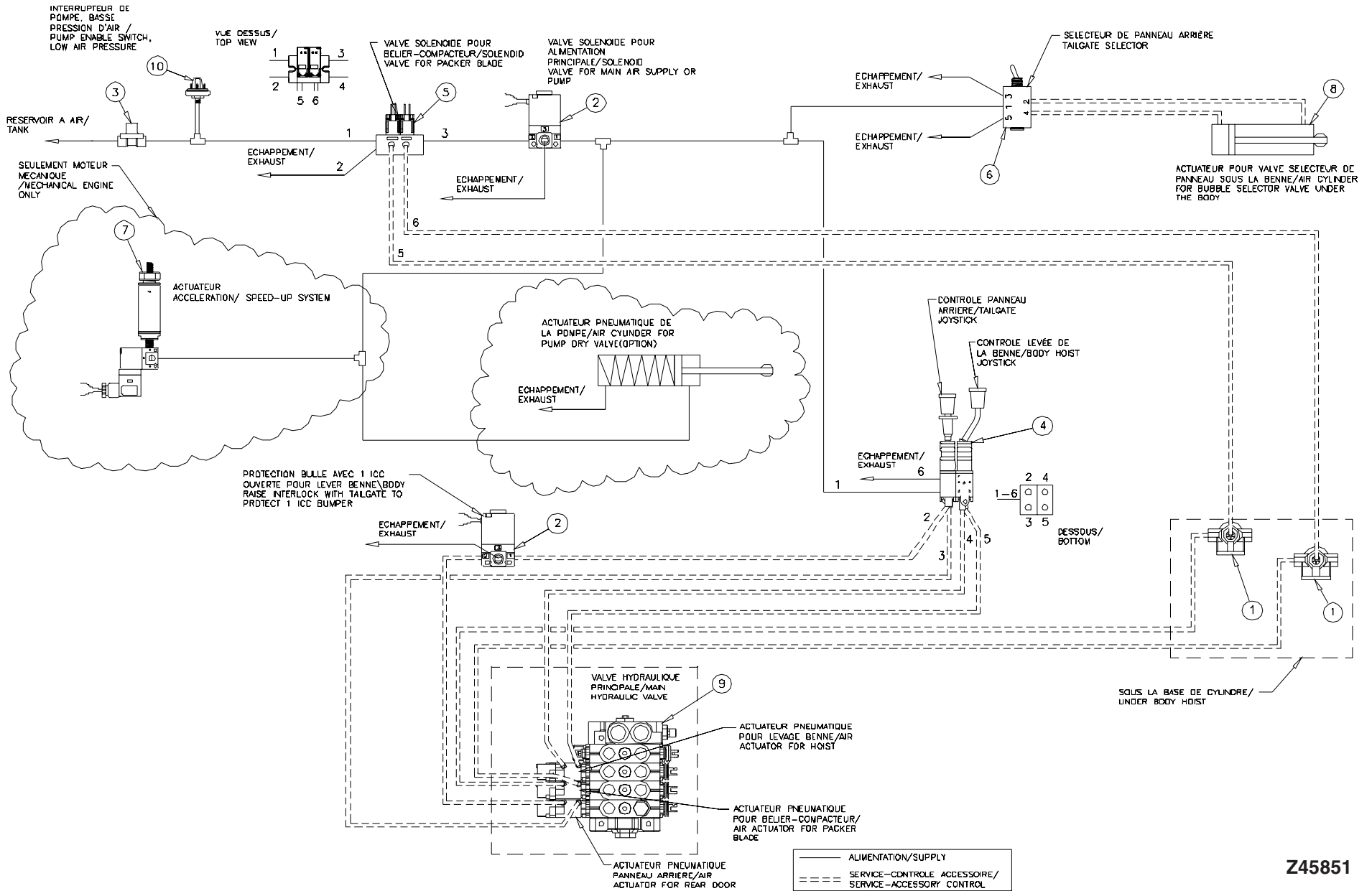
7.3 COMINGLE SPLIT BODY PNEUMATIC SCHEMATICS

7.3.1 INTERNAL SWING DOOR PNEUMATIC SCHEMATICS

No.	Part no.	Description	Qty.
1	PNV01100	Quick release valve	2
2	PNV01957	Solenoid valve	2
3	PNV02600	Safety valve	1
4	PNJ00110	Dual control joystick	1
5	PNV01914	Solenoid valve	1
6	PNV02325	Tailgate selector switch	1
7	PNC00252	Air cylinder "bimba"	1
8	PNC00700	Air Cylinder	1
9	SERIAL #	Main control valve	1
10	PNI00400	Pressure switch	2

7.3 COMINGLE SPLIT BODY PNEUMATIC SCHEMATICS

7.3.2 DUAL TAILGATE



Z45851

7.3 COMINGLE SPLIT BODY PNEUMATIC SCHEMATICS

7.3.2 DUAL TAILGATE

No.	Part no.	Description	Qty.
1	PNV01100	Quick release valve	2
2	PNV01957	Solenoid valve	2
3	PNV02600	Safety valve	1
4	PNJ00110	Dual control joystick	1
5	PNV01914	Solenoid valve	1
6	PNV02325	Tailgate selector switch	1
7	PNC00252	Air cylinder "bimba"	1
8	PNC00700	Air Cylinder	1
9	SERIAL #	Main control valve	1
10	PNI00400	Pressure switch	1

