

HYDRAULIC SYSTEM

EXPERT 2000

* For Expert 2000 equipped with optional features such as glass compartment, cart tipper or hopper chute, refer to the related section of the manual.

Release date: April 2002

Part #47005 rev. 0

HYDRAULIC SYSTEM

EXPERT 2000

Table of contents

5.0	HYDRAULIC SYSTEM PARTS	5 -5
5.1	EXPERT 2000 HYDRAULIC PARTS	5 -5
5.1.1	INTRODUCTION	5 -5
5.1.2	HOW TO ORDER	5 -7
5.2	17, 22, 29, 34 CU.YD STANDARD BODY	5 -8
5.2.1	STANDARD HYDRAULIC DIAGRAM, 3000 PSI system, with single crusher panel	5 -8
5.2.2	MAIN HYDRAULIC VALVE, 3000 PSI system, with single crusher panel	5 -10
5.2.3	MAIN HYDRAULIC VALVE, 3000 PSI system, with single air actuated crusher panel	5 -12
5.3	EXPERT 2000 HYDRAULIC TANKS	5 -14
5.3.1	STANDARD HYDRAULIC TANK	5 -14
5.4	MAIN HYDRAULIC SCHEMATIC (Gear pump)	5 -16
5.5	MAIN HYDRAULIC SCHEMATIC (Vane pump)	5 -18

5.0 HYDRAULIC SYSTEM PARTS

5.1 EXPERT 2000 HYDRAULIC PARTS

5.1.1 INTRODUCTION

All hoses and pipes on both the chassis and body are now identified with part number tags (Figure #5.1 & #5.2). Call the Labrie Parts and Service department, and make sure to give the serial number of the vehicle, a brief description of the part and the number that appears on the tag. This will ensure the delivery of the right component.

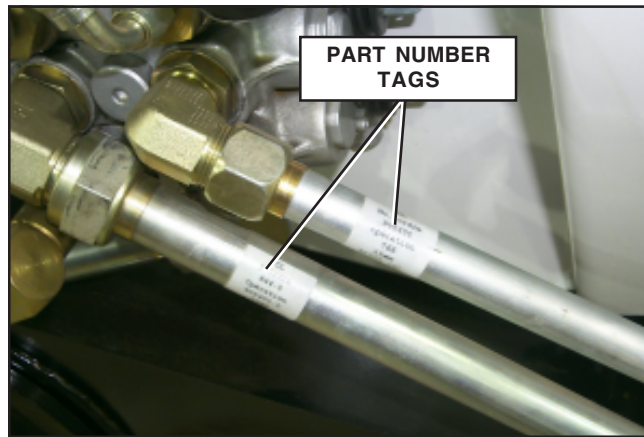


Figure #5.1

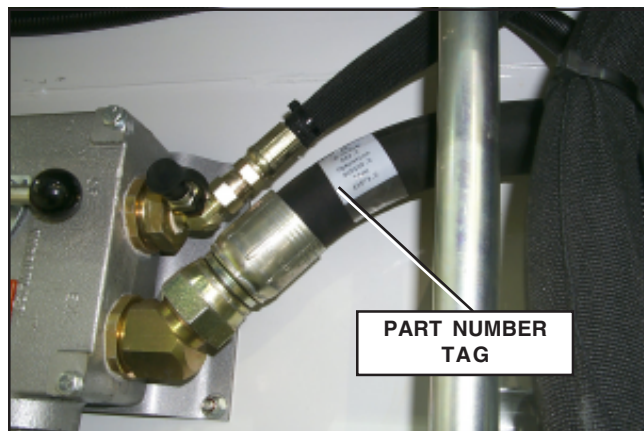
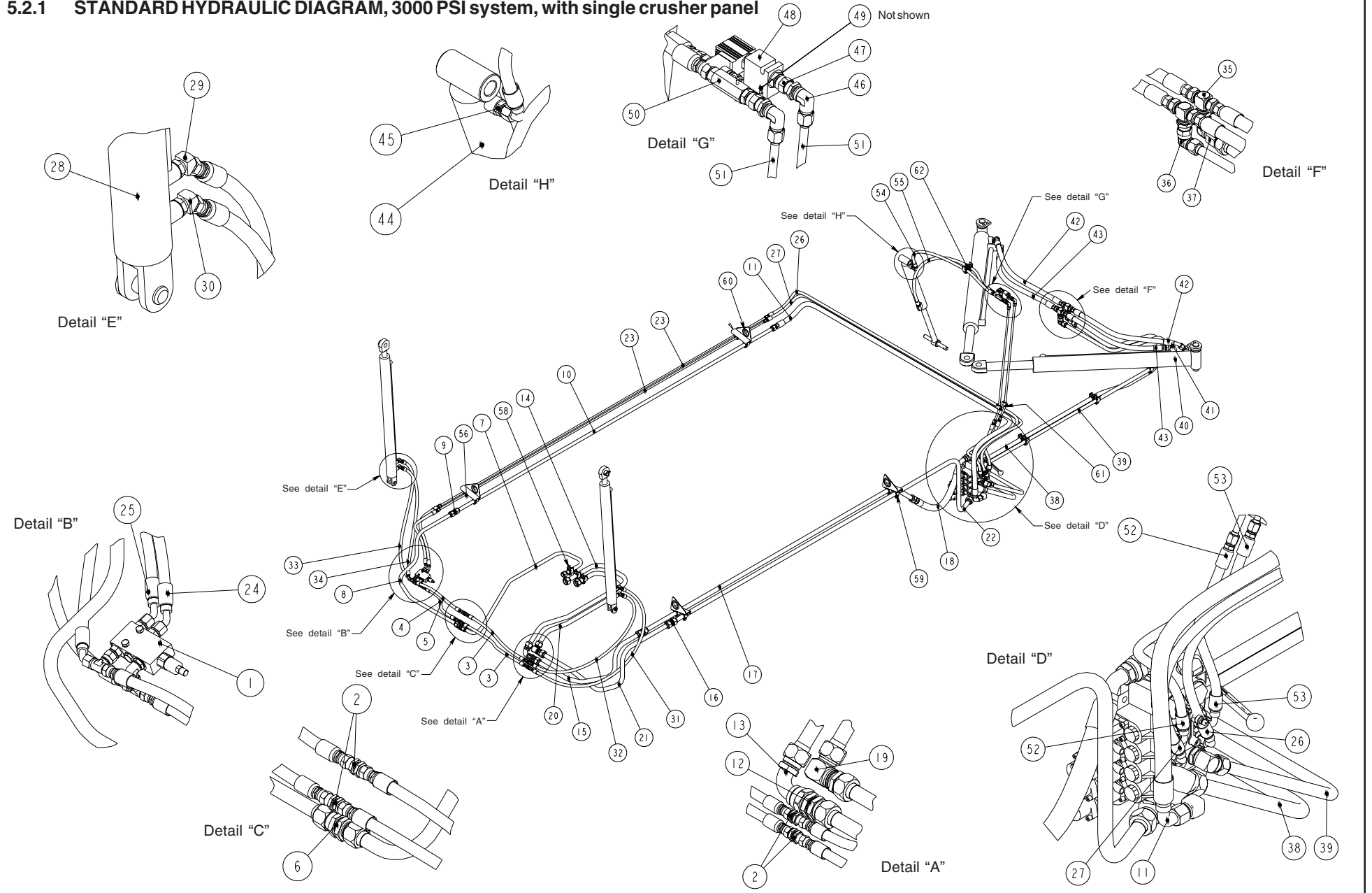


Figure #5.2

5.2 17, 22, 29, 34 CU.YD STANDARD BODY

5.2.1 STANDARD HYDRAULIC DIAGRAM, 3000 PSI system, with single crusher panel



5.2 17, 22, 29, 34 CU.YD STANDARD BODY

5.2.1 STANDARD HYDRAULIC DIAGRAM, 3000 PSI system, with single crusher panel

No.	Part no.	Body Capacity	Qty.	No.	Part no.	Body Capacity	Qty.	No.	Part no.	Body Capacity	Qty.
1	43208	ALL	1	28	HYC00320	ALL (90° TAILGATE OPENING)	2	56	HYS00200	ALL (Hydrasorb)	4
2	HYF06500	ALL	4		HYC00275	ALL (80° TAILGATE OPENING)	2	57	HYS00300	ALL (Hydrasorb)	n/a
3	30273	ALL	2	29	HYF05120	ALL	2	58	HYS00400	ALL (Hydrasorb)	6
4	43211	17 cu. yd.	1	30	10384	ALL	2	59	HYS00400	ALL (Hydrasorb)	8
	25869	22, 29, 34 cu. yd.	1	31	30300	17 cu. yd.	1	60	QUG01000	ALL (Hydrasorb)	4
5	43210	17 cu. yd.	1		30279	22, 29, 34 cu. yd.	1	61	HYS00200	ALL (Hydrasorb)	2
	10755	22, 29, 34 cu. yd.	1	32	30316	17 cu. yd.	1		HYS01025	ALL (Stauff)	1
6	HYF06700	ALL	1		30280	22, 29, 34 cu. yd.	1	62	HYS00460	ALL (Hydrasorb)	2
7	25180	17, 22, 29 cu. yd.	1	33	8125	17 cu. yd.	1		HYS01175	ALL (Stauff)	1
	25180	34 cu. yd. w/ tag axle	1		30274	22, 29, 34 cu. yd.	1				
	25467	34 cu. yd. w/o tag axle	1	34	43213	17 cu. yd.	1				
8	30312	17 cu. yd.	1		43209	22, 29, 34 cu. yd.	1				
	25190	22, 29, 34 cu. yd.	1	35	HYF05600	ALL	2				
9	HYF05400	ALL	1	36	HYF08200	ALL	2				
10	12288	17, 22 cu. yd.	1	37	HYF09650	ALL	1				
	12223	29 cu. yd.	1	38	25671	17 cu. yd.	1				
	12429	34 cu. yd.	1		24732	22, 29, 34 cu. yd.	1				
11	30281	ALL (2 wire braid / 2000PSI)	1		24732	22, 29, 34 cu. yd. w/ Dual Cart Tipper	1				
	37331	ALL (4 wire braid / 3000PSI)	1		25996	22, 29, 34 cu. yd. w/ Helping Hand	1				
12	HYF06750	ALL	1	39	25670	17 cu. yd.	1				
13	HYF08207	ALL	1		24731	22, 29, 34 cu. yd.	1				
14	24988	17, 22, 29 cu. yd.	1		25670	22, 29, 34 cu. yd. w/ Dual Cart Tipper	1				
	24988	34 cu. yd. w/ tag axle	1		25995	22, 29, 34 cu. yd. w/ Helping Hand	1				
	25462	34 cu. yd. w/o tag axle	1	40	HYC00507	ALL (4" dia. cylinder)	2				
15	25250	22, 29, 34 cu. yd.	1		HYC00510	ALL (5" dia. cylinder)	2				
	30314	17 cu. yd.	1	41	HYF0760	ALL	4				
16	HYF05610	ALL	2	42	30363	ALL (2 wire braid / 2000PSI)	2				
17	11377	17, 22 cu. yd.	1		40971	ALL (4 wire braid / 3000PSI)	1				
	10900	29 cu. yd.	1	43	10337	ALL (2 wire braid / 2000PSI w/ 4" dia. cyl.)	2				
	11070	34 cu. yd.	1		10338	ALL (2 wire braid / 2000PSI w/ 5" dia. cyl.)	2				
18	40970	ALL	1		23553	ALL (4 wire braid / 3000PSI w/ 4" dia. cyl.)	2				
19	HYF07025	ALL	1		37343	ALL (4 wire braid / 3000PSI w/ 5" dia. cyl.)	2				
20	22304	17, 22, 29 cu. yd.	1	44	HYC00197	ALL	1				
21	30313	17 cu. yd.	1	45	HYF05110	ALL	1				
	25248	22, 29, 34 cu. yd.	1	46	HYF06800	ALL	2				
22	21248	17, 22 cu. yd.	1	47	HYF05170	ALL	1				
	20592	29 cu. yd.	1	48	HYV00865	ALL	1				
	21249	34 cu. yd.	1	49	HYF05125	ALL	1				
23	11375	17, 22 cu. yd.	2	50	24511	ALL	2				
	10395	29 cu. yd.	2	51	11086	ALL	2				
	10974	34 cu. yd.	2	52	10738	ALL	1				
24	43212	17 cu. yd.	1	53	10737	ALL	1				
	30275	22, 29, 34 cu. yd.	1	54	40976	ALL w/ crusher panel (full)	1				
25	43212	17 cu. yd.	1		10175	ALL cmg 60/40 w/ L-H crusher panel (60%)	1				
	30277	22, 29, 34 cu. yd.	1		19930	ALL cmg 40/60 w/ R-H crusher panel (60%)	1				
26	30283	ALL	1	55	10416	ALL w/ crusher panel (full)	1				
27	30284	ALL	1		18174	ALL cmg 60/40 w/ L-H crusher panel (60%)	1				
					19931	ALL cmg 40/60 w/ R-H crusher panel (60%)	1				

NOTE:

Refer to Comingle Split Body section for hydraulic diagrams

5.2 17, 22, 29, 34 CU.YD STANDARD BODY

5.2.2 MAIN HYDRAULIC VALVE, 3000 PSI system, with single crusher panel

No.	Part no.	Description	Qty.
1	27135	Handle kit	1
2	-	Yoke	1
3	-	linkage	1
4	-	Cotter pins	2
5	7122	Handle bracket	1
6	HYV03010	Boot	1
7	HYV03003	Work port relief (1700psi)	1
7	HYV03004	Work port relief (2000psi)	1
8	HYV03005	Velocity fuse	1
9	HYV03008	Main relief	1
10	HYF09000	Fitting union	1
11	HYF10050	Dust cap	1
12	HYF10200	Coupler	1
13	HYV03000	Main valve assy (3000psi)	1
14	HYF04685	Fitting adaptor	1
15	HYV03014	Work port relief (1700psi)	1
16	HYA00105	Spring return positioner cover	1
17	HYA00110	Positioner spring	1
18	HYA00105	Spring return positioner cover	3
19	HYA00110	Positioner spring	3
20	HYA00100	Air Actuator	3

NOTE:

Refer to Comingle Split Body section for hydraulic diagrams

5.2 17, 22, 29, 34 CU.YD STANDARD BODY

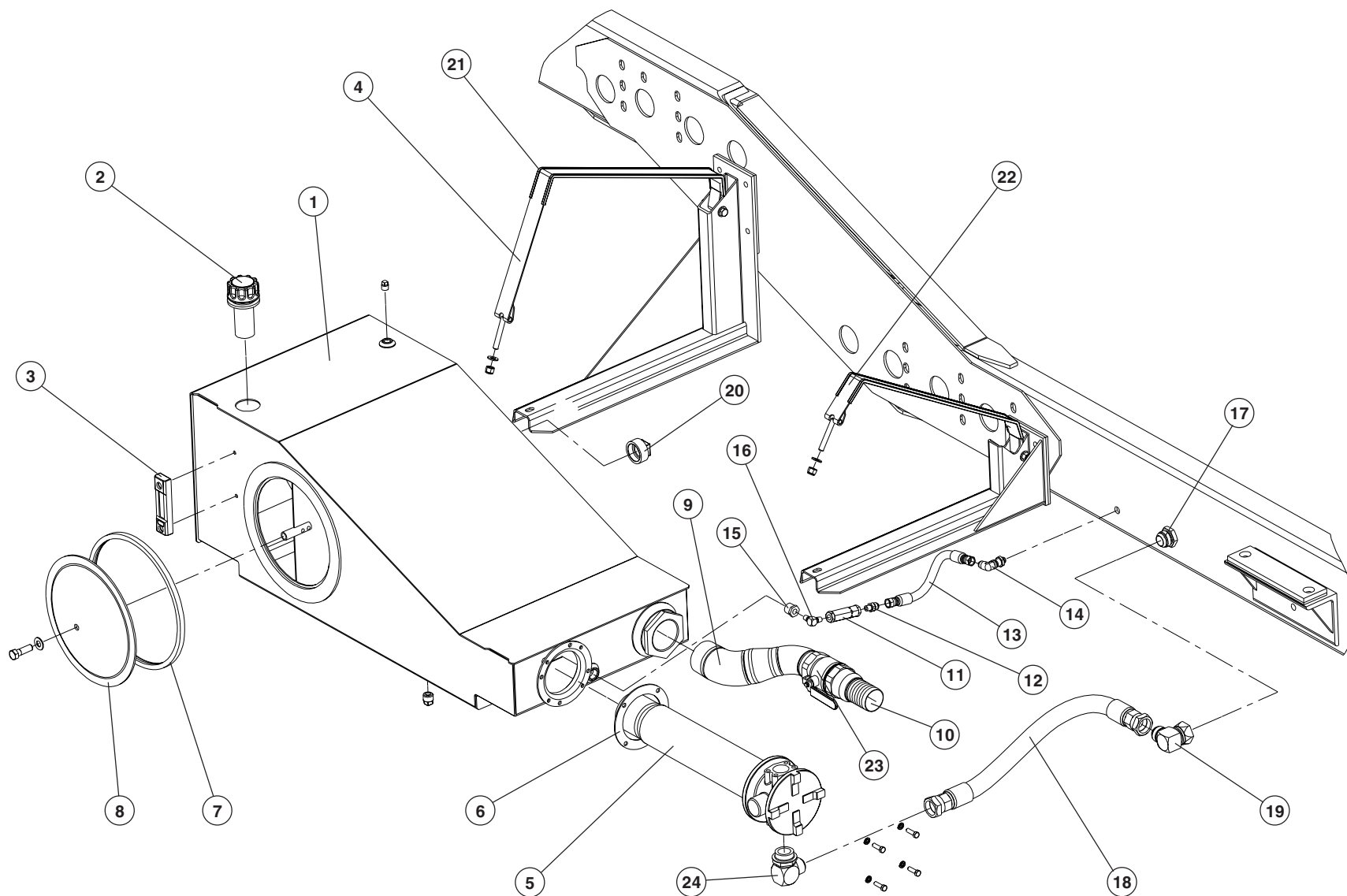
5.2.3 MAIN HYDRAULIC VALVE, 3000 PSI system, with single air actuated crusher panel

No.	Part no.	Description	Qty.
1	27135	Handle kit	1
2	-	Yoke	1
3	-	linkage	1
4	-	Cotter pins	2
5	7122	Handle bracket	1
6	HYV03010	Boot	1
7	HYV03003	Work port relief (1700psi)	1
7	HYV03004	Work port relief (2000psi)	1
8	HYV03005	Velocity fuse	1
9	HYV03008	Main relief	1
10	HYF09000	Fitting union	1
11	HYF10050	Dust cap	1
12	HYF10200	Coupler	1
13	HYV03000	Main valve assy (3000psi)	1
14	HYF04685	Fitting adaptor	1
15	HYV03014	Work port relief (1700psi)	1
16	HYA00105	Spring return positioner cover	1
17	HYA00110	Positioner spring	1
18	HYA00105	Spring return positioner cover	4
19	HYA00110	Positioner spring	4
20	HYA00100	Air Actuator	4

NOTE:
Refer to Comingle Split Body section for hydraulic diagrams

5.3 EXPERT 2000 HYDRAULIC TANKS

5.3.1 STANDARDHYDRAULICTANK

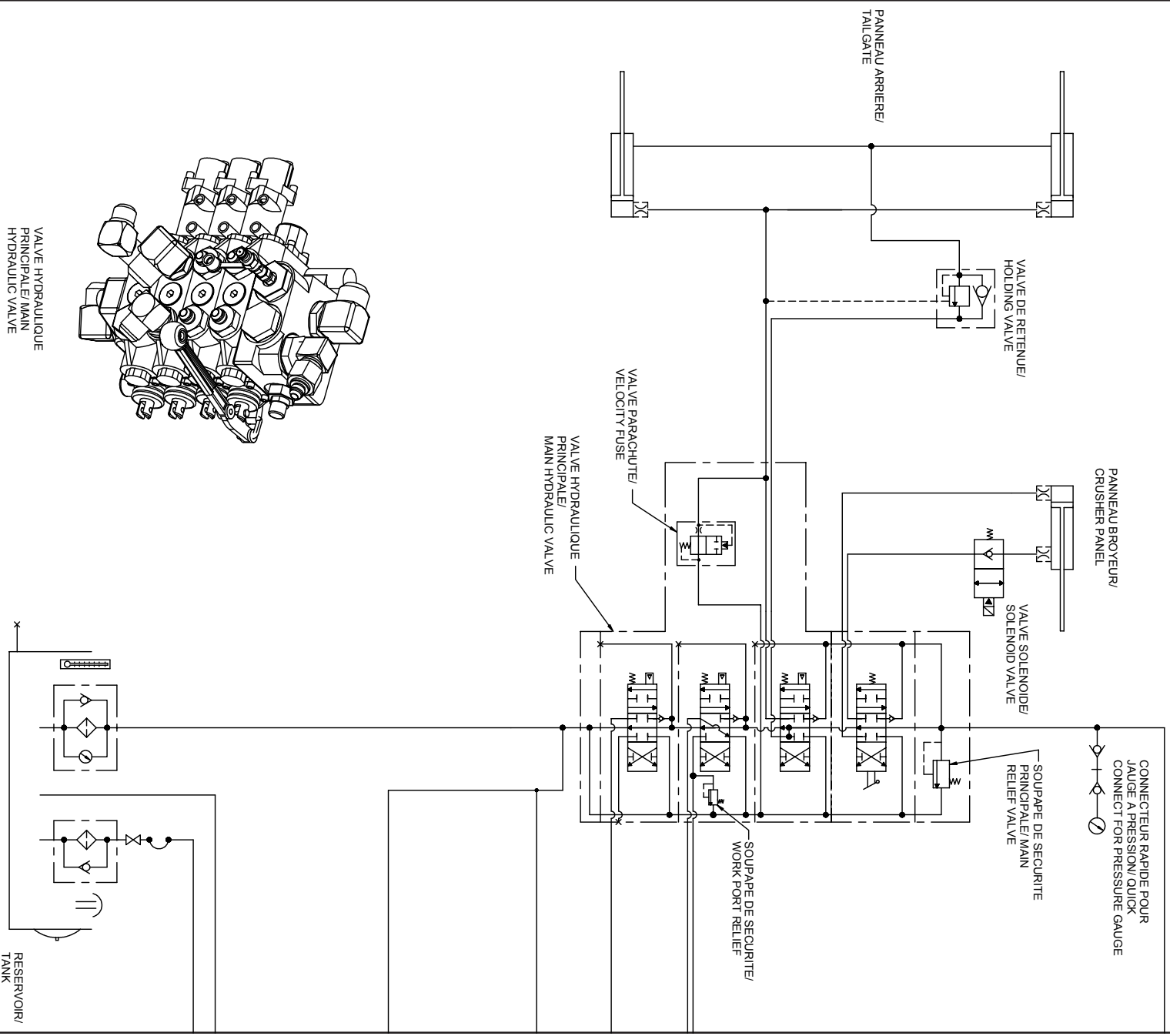


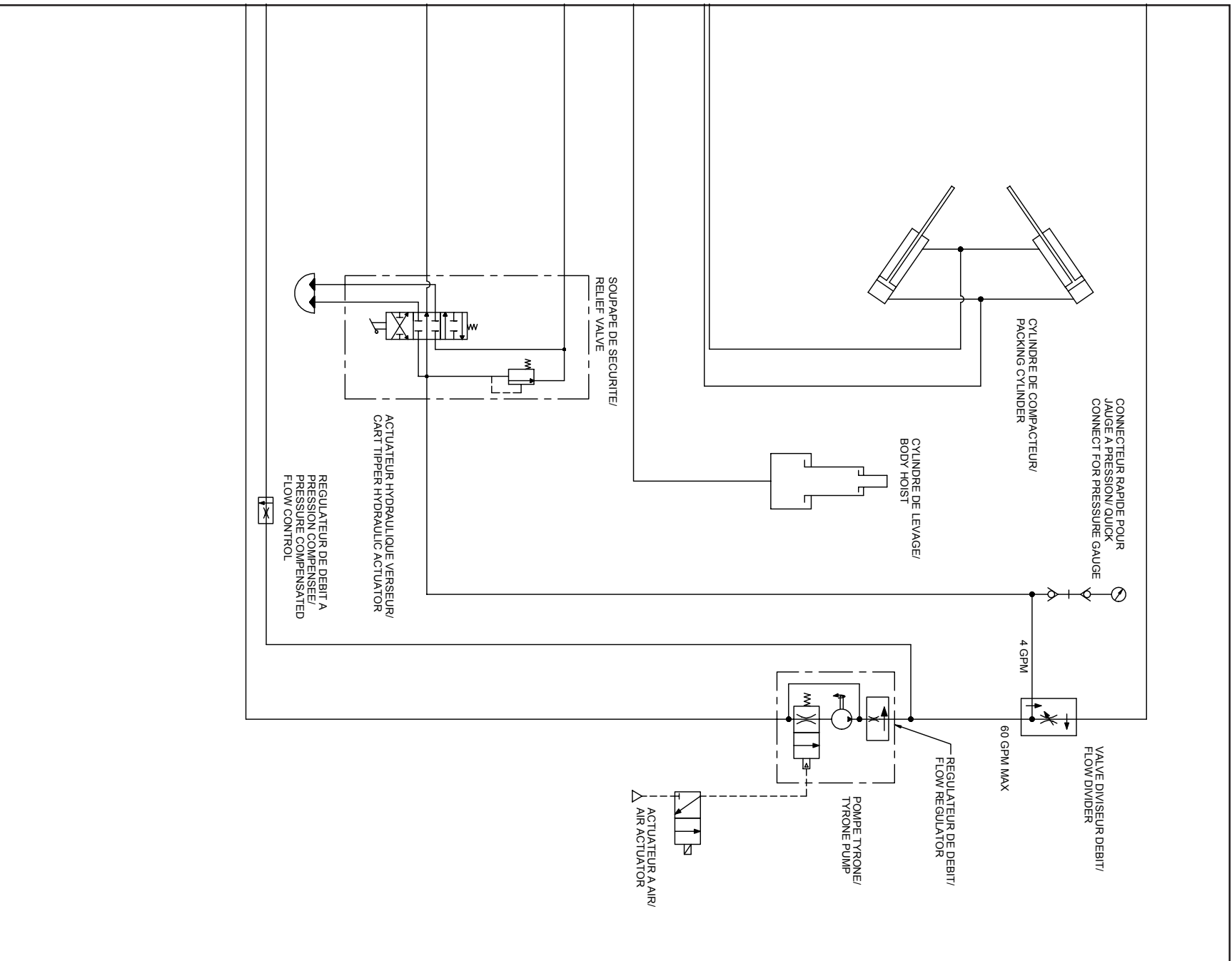
5.3 EXPERT 2000 HYDRAULIC TANKS

5.3.1 STANDARD HYDRAULIC TANK

No.	Part no.	Description	Qty.
1	Serial# Only	Hydraulic tank assy.	1
2	Serial# Only	Filler breather cap	1
	Serial# Only	Filler pressurized cap	1
	Serial# Only	Pall breather cap	1
3	HYJ00150	Oil / Temp gage	1
4	26037	Rear strap	1
5	HYF20015	Filter assy.	1
	HYF20030	Filter element	1
6	HYF20025	Filter seal	1
7	HYV02250	Access cover seal	1
8	HYV02200	Access cover	1
9	30397	Succion pipe	1
10	HYF14050	King nipple	1
11	HYC02250	Flow control (Tyrone pump)	1
12	Serial# Only	Fitting	1
13	Serial# Only	Hose	1
14	Serial# Only	Fitting bulkhead	1
15	Serial# Only	Fitting	1
16	Serial# Only	Fitting	1
17	Serial# Only	Fitting bulkhead	1
18	Serial# Only	Hose	1
19	Serial# Only	Fitting	1
20	Serial# Only	Cap	1
21	C1100110	Strap Lining	2
22	26039	Front Strap	1
23	HYV01850	Ball valve	1
24	Serial# Only	Fitting	1

5.4 MAIN HYDRAULIC SCHEMATIC (Gear pump)





5.5 MAIN HYDRAULIC SCHEMATIC (Vane pump)

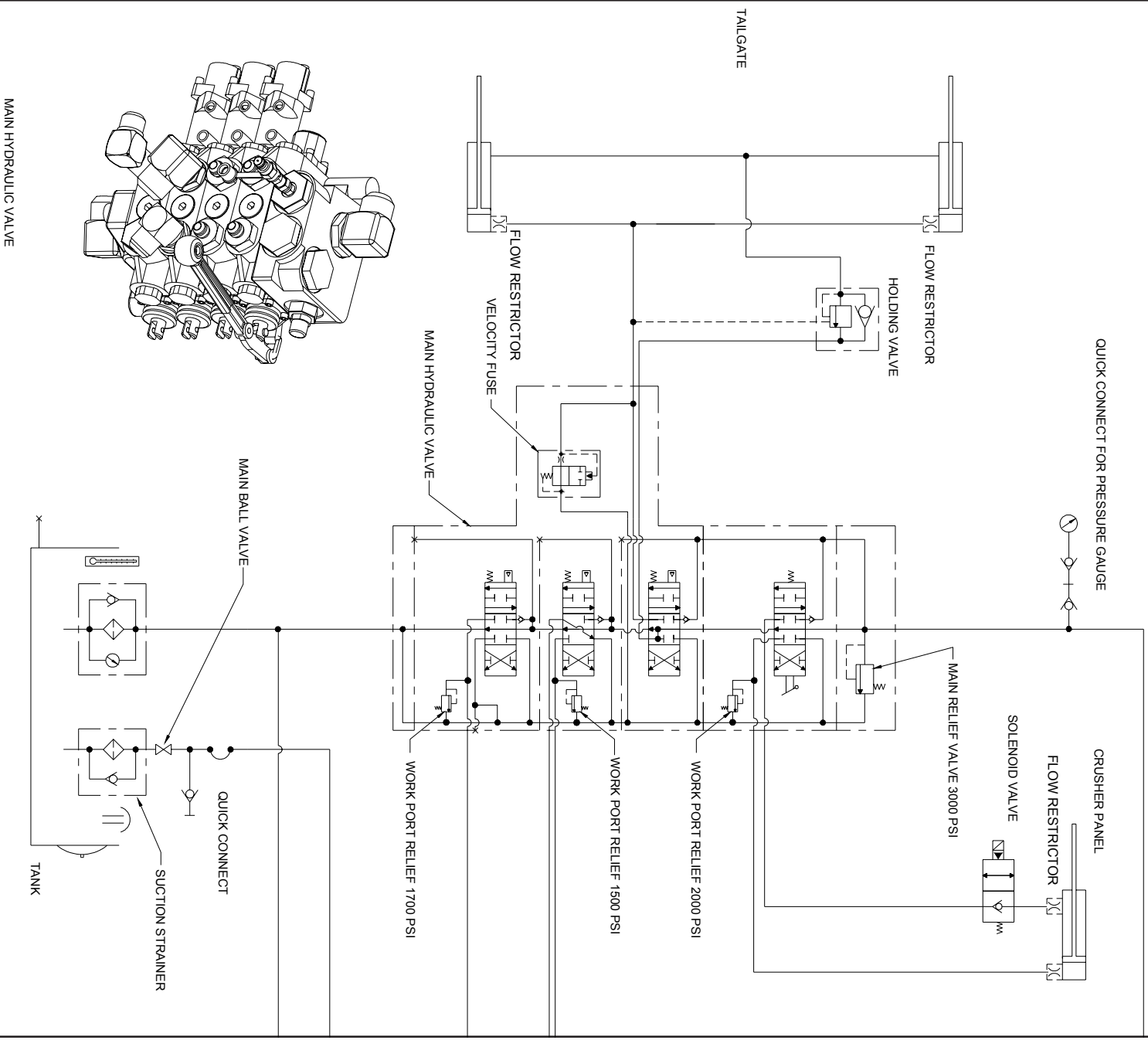


FIGURE #3.67

