

PNEUMATIC SYSTEM

AUTOMIZER VERSA HAND™



LabriePlus™

Parts, Service and Warranty
(during business hours)

Technical Support Service
(24 hours)

1-800-231-2771

3630 Stearns Drive

Oshkosh, WI 54904



PNEUMATIC SYSTEM

AUTOMIZER VERSA HAND™

Table of Contents

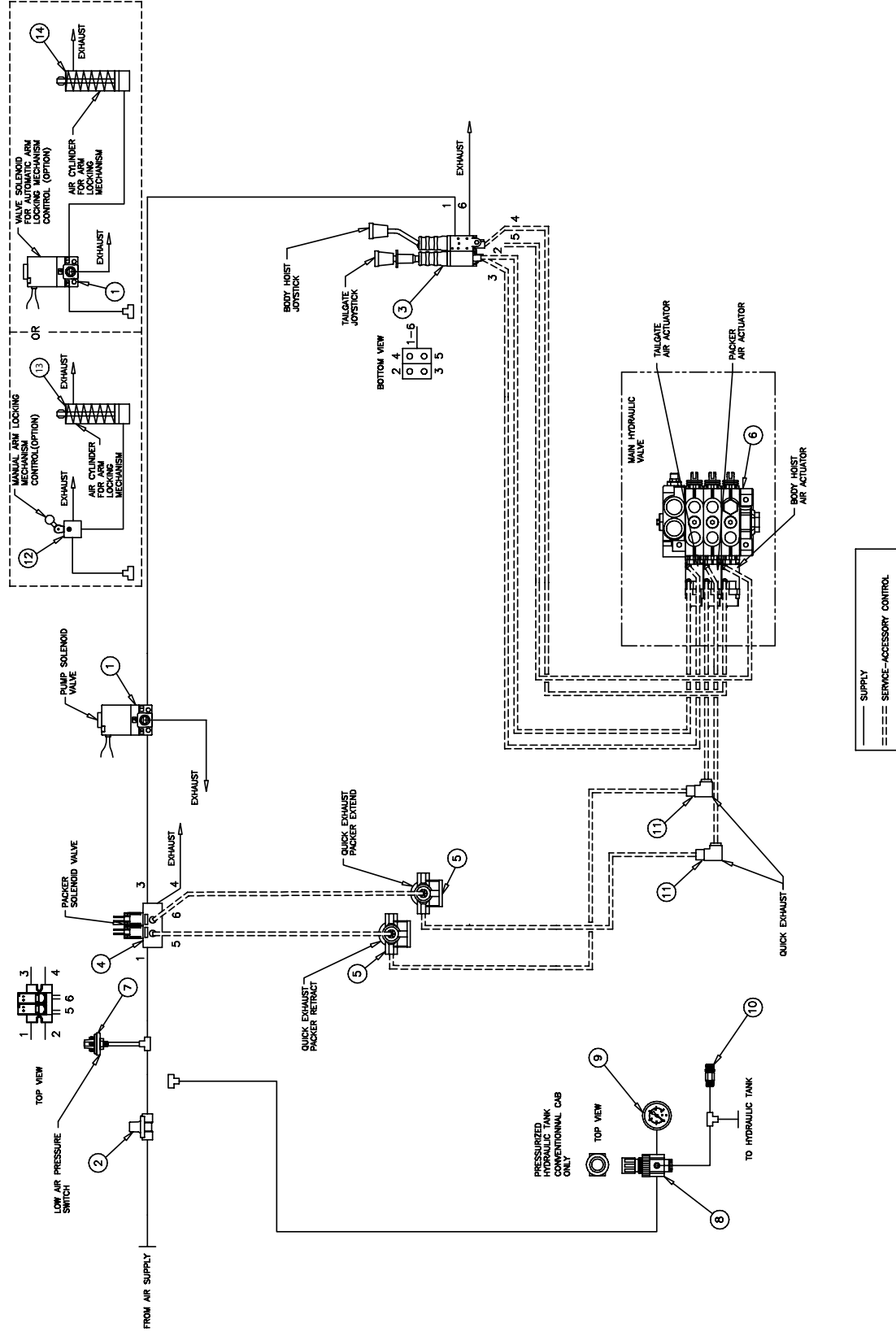
6.0	PNEUMATIC SYSTEM	6 - 5
6.1	INTRODUCTION	6 - 5
6.2	PNEUMATIC SYSTEM	6 - 6

6.0 PNEUMATIC SYSTEM

6.1 INTRODUCTION

This section contains pneumatic system schematics for the AUTOMIZER™ unit. Before searching for parts, identify the type of cab of your unit: cab over or conventional cab. The mounting of some components for the body depends on the type of cab configuration. The comingle units also have special parts related to their special tailgate controls. Verify if you have a dual tailgate configuration or a single tailgate.

6.2 PNEUMATIC SYSTEM



6.2 PNEUMATIC SYSTEM

N°	PART N°	DESCRIPTION	QTY.
1.	PNV01957	SOLENOID VALVE	1-2
2.	PNV02600	SOLENOID VALVE	1
3.	PNJ00110	JOYSTICK	1
4.	PNV01914	SOLENOID VALVE	1
5.	PNV01110	QUICK EXHAUST	2
6.	-----	MAIN HYDRAULIC VALVE	1
7.	PNi00600	PRESSURE SWITCH	1
8.	PNR01000	PRESSURE REGULATOR	1
9.	PNJ01100	PRESSURE GAGE	1
10.	PNS01000	SAFETY VALVE	1
11.	PNV01150	QUICK EXHAUST	2
12.	PNV02311	AIR VALVE	0-2
13.	PNC00860	AIR CYLINDER	0-1

