

60/427

Articulating Crane Technical Specifications

60/427 Lifting Capacities

60/427 - 2 Hydraulic

	27845 lb 12630 kg	19730 lb 8950 kg	15235 lb 6910 kg
	14'-9"	20'-8"	26'-11"
	4.5 m	6.3 m	8.2 m

60/427 - 3 Hydraulic

	27115 lb 12300 kg	19070 lb 8650 kg	14575 lb 6610 kg	11705 lb 5310 kg
	14'-9"	20'-8"	26'-11"	33'-6"
	4.5 m	6.3 m	8.2 m	10.2 m

60/427 - 4 Hydraulic

	26765 lb 12140 kg	18605 lb 8440 kg	14045 lb 6370 kg	11135 lb 5050 kg	9195 lb 4170 kg
	14'-9"	20'-8"	26'-11"	33'-6"	40'-4"
	4.5 m	6.3 m	8.2 m	10.2 m	12.3 m

60/427 - 5 Hydraulic

	25970 lb 11780 kg	17945 lb 8140 kg	13450 lb 6100 kg	10580 lb 4800 kg	8640 lb 3920 kg	7295 lb 3310 kg
	14'-9"	21'-0"	27'-3"	33'-9"	40'-8"	47'-11"
	4.5 m	6.4 m	8.3 m	10.3 m	12.4 m	14.6 m

60/427 - 6 Hydraulic

	26610 lb 12070 kg	18825 lb 8540 kg	14265 lb 6470 kg	11245 lb 5100 kg	9170 lb 4160 kg	7650 lb 3470 kg	6570 lb 2980 kg
	14'-5"	19'-8"	25'-3"	31'-2"	37'-5"	44'-3"	51'-2"
	4.4 m	6.0 m	7.7 m	9.5 m	11.4 m	13.5 m	15.6 m

60/427 - 7 Hydraulic

	25245 lb 11450 kg	17880 lb 8110 kg	13515 lb 6130 kg	10735 lb 4870 kg	8575 lb 3890 kg	7075 lb 3210 kg	6020 lb 2730 kg	5225 lb 2370 kg
	15'-1"	20'-4"	25'-11"	31'-10"	38'-1"	44'-11"	51'-10"	59'-5"
	4.6 m	6.2 m	7.9 m	9.7 m	11.6 m	13.7 m	15.8 m	18.1 m

60/427 - 8 Hydraulic

	24715 lb 11210 kg	17415 lb 7900 kg	13030 lb 5910 kg	10140 lb 4600 kg	8135 lb 3690 kg	6635 lb 3010 kg	5580 lb 2530 kg	4785 lb 2170 kg	4210 lb 1910 kg
	15'-1"	20'-8"	26'-3"	32'-2"	38'-5"	44'-11"	52'-2"	59'-8"	67'-3"
	4.6 m	6.3 m	8.0 m	9.8 m	11.7 m	13.7 m	15.9 m	18.2 m	20.5 m



Note: Crane appearance subject to change.

60/427 Specifications

Outrigger Pad Diameter	7.9" (200 mm)
Crane Storage Height	7' 11" (2425 mm)
Mounting Space (K2 - K5) ***	4' 4" (1325 mm)
Mounting Space (K6 - K8) ***	4' 9" (1460 mm)
Mounting Space (K6 with K6 FJ1200) ***	5' 2" (1585 mm)
Rotational Torque	50,630 ft-lb (7.0 tm)
Rotation	Continuous
Optimum Pump Performance	2X17gpm (2X65 L/min)
System Pressure	5075 psi (350 bar)
Oil Reservoir Capacity	55.5 gal (210 L)
Outrigger Extension Span	
Standard (hydraulic out / hydraulic down)	27' 7" (8420 mm)
Weight	1,545 lb (700 kg)

Minimum Chassis Specifications

Front Axle Rating (GAWR)	20,000 lb (9070 kg)
Rear Axle Rating (GAWR)	46,000 lb (20,865 kg)
Resistance To Bending Moment	5,700,000 in-lb (656,710 kg-m)

60/427	2 - Hydraulic	3 - Hydraulic	4 - Hydraulic	5 - Hydraulic	6 - Hydraulic	7 - Hydraulic	8 - Hydraulic
Crane Rating*	409,390 ft lb (56.6 tm)	398,540 ft lb (55.1 tm)	391,305 ft lb (54.1 tm)	386,240 ft lb (53.4 tm)	382,625 ft lb (52.9 tm)	378,285 ft lb (52.3 tm)	373,225 ft lb (51.6 tm)
Maximum Horizontal Reach	27' 3" (8.3 m)	34' 1" (10.4 m)	40' 8" (12.4 m)	48' 3" (14.7 m)	51' 10" (15.8 m)	59' 9" (18.2 m)	67' 7" (20.6 m)
Maximum Vertical Reach	36' 5" (11.1 m)	43' 0" (13.1 m)	49' 6" (15.1 m)	56' 9" (17.3 m)	61' 8" (18.8 m)	69' 3" (21.1 m)	76' 9" (23.4 m)
Maximum Capacity	27,845 lb (12,630 kg)	27,115 lb (12,300 kg)	26,765 lb (12,140 kg)	25,970 lb (11,780 kg)	26,610 lb (12,070 kg)	25,245 lb (11,450 kg)	24,715 lb (11,210 kg)
Max Cap @ Max Reach	15,235 lb (6910 kg)	11,705 lb (5310 kg)	9195 lb (4170 kg)	7295 lb (3310 kg)	6570 lb (2980 kg)	5225 lb (2370 kg)	4210 lb (1910 kg)
Crane Weight **	9735 lb (4415 kg)	10,395 lb (4715 kg)	11,055 lb (5015 kg)	11,650 lb (5285 kg)	12,050 lb (5465 kg)	12,490 lb (5665 kg)	12,930 lb (5865 kg)
Hook Approach							
Vertical	10' 6" (3.2 m)	10' 2" (3.1 m)	9' 10" (3.0 m)	9' 6" (2.9 m)	10' 2" (3.1 m)	9' 2" (2.8 m)	9' 2" (2.8 m)
Horizontal	4'-11" (1.5 m)	4'-11" (1.5 m)	4'-11" (1.5 m)	4'-11" (1.5 m)	4'-11" (1.5 m)	4'-11" (1.5 m)	4'-11" (1.5 m)
Center of Gravity - Stored							
Vertical	3' 1" (930 mm)	3' 1" (945 mm)	3' 1" (950 mm)	3' 2" (960 mm)	3' 2" (960 mm)	3' 2" (969 mm)	3' 3" (983 mm)
Horizontal (C/L RotTo Bridge)	12.1" (308 mm)	12.0" (305 mm)	12.2" (310 mm)	12.0" (306 mm)	12.3" (313 mm)	12.2" (309 mm)	12.0" (304 mm)

* Crane rating (ft-lb) is the rated load (lb) multiplied by the respective distance (ft) from centerline of rotation with all extensions retracted and the inner and outer booms in a horizontal position, per ANSI B30.22.

** Crane weight does not include outriggers. *** Maximum swing clearance radius required is 3'-1" (935 mm) at 8'-9" (2660 mm) from top of chassis frame.

© 2009 Iowa Mold Tooling Co., Inc. All Rights Reserved.



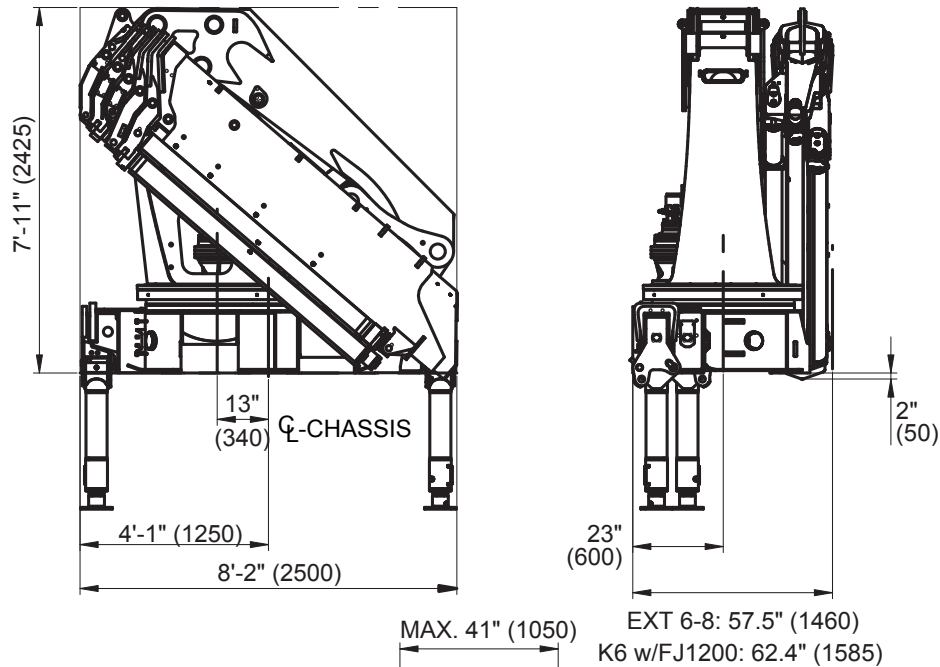
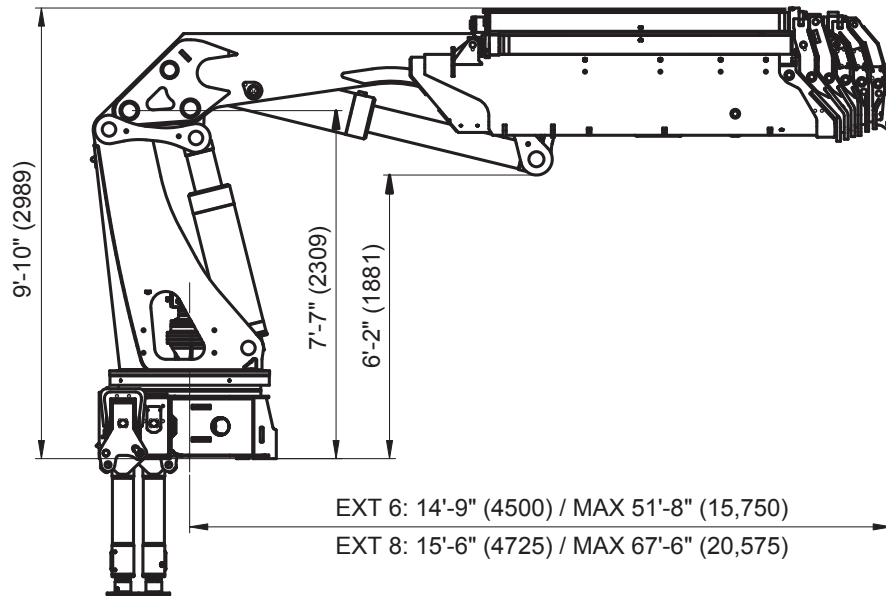
An Oshkosh Corporation Company

60/427 Articulating Crane

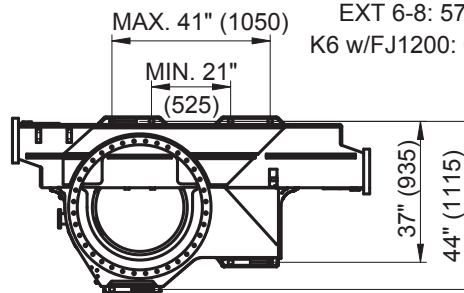


An Oshkosh Corporation Company

Geometric Configurations



NOTE:
ALL DIMENSIONS IN
FEET & INCHES (mm).



Iowa Mold Tooling Co., Inc.

500 Highway 18 West P.O. Box 189 Garner, Iowa 50438-0189
800-247-5958 641-923-3711 Fax: 641-923-6063 www.imt.com

IMT reserves the right to make changes in engineering, design, and specifications; add improvements; or discontinue manufacturing at any time without notice or obligation.
IMT and the IMT LOGO are registered trademarks or trademarks of Iowa Mold Tooling Co., Inc., Garner, IA, USA.

© 2009 Iowa Mold Tooling Co., Inc. All Rights Reserved.