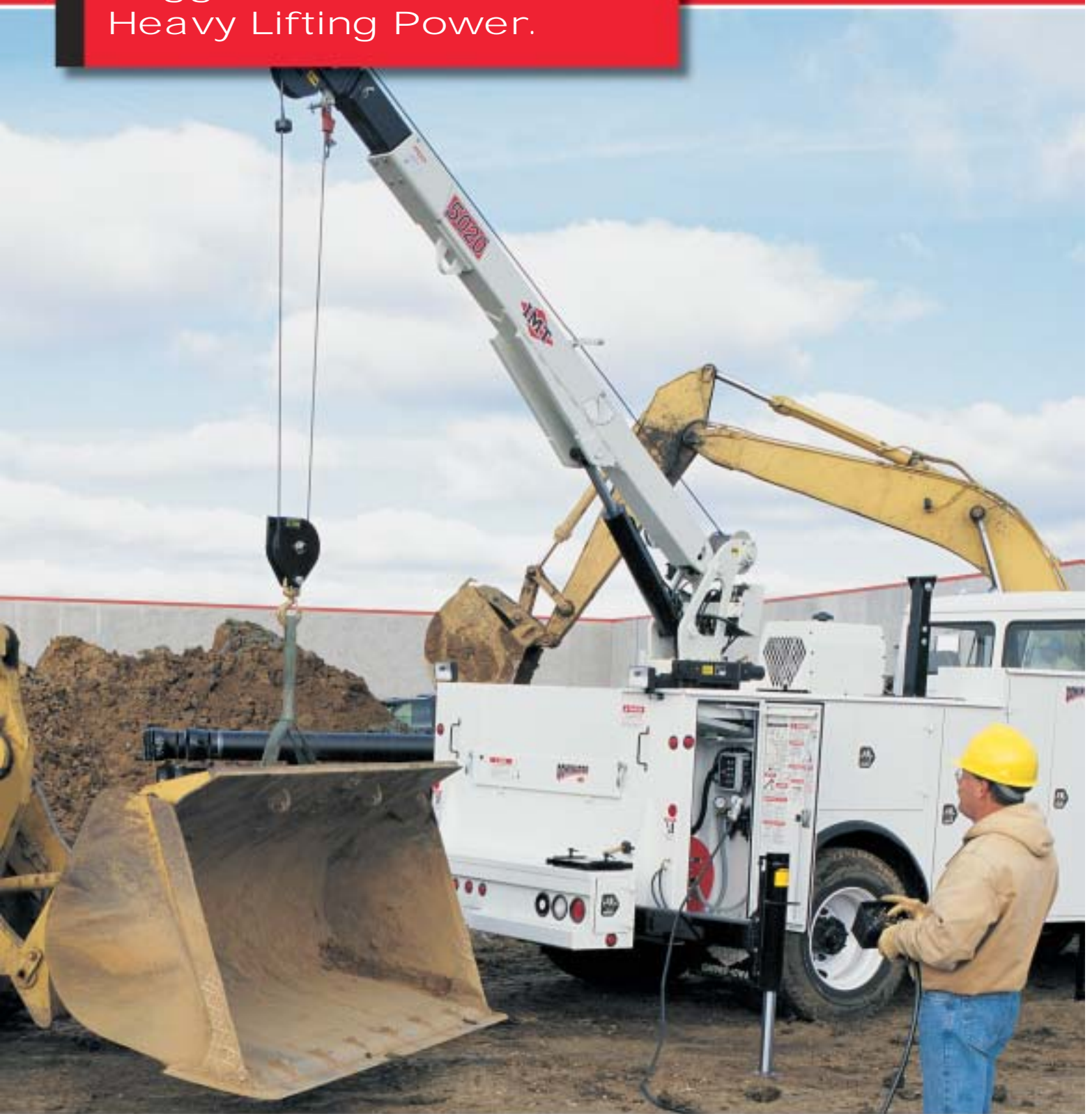


Telescopic Cranes

Compact Designs,
Rugged Winches,
Heavy Lifting Power.



Medium-Duty Application Telescopic Cranes



Excellent lift capacity is the recognized trademark of both medium-duty and heavy-duty application IMT telescopic cranes.

Outstanding Value, Maximum Capacities.

IMT's family of medium-duty application telescopic cranes, with maximum capacities ranging from 920 lb (417 kg) to 6000 lb (2722 kg), is an outstanding value. This range of cranes provides a no-nonsense approach to your material handling needs.

Each model features cylinder holding valves to prevent sudden cylinder collapse, capacity alert systems to prevent boom overload and reliable winches that provide "stop-start" capabilities under load.

IMT medium-duty cranes are some of the most compact cranes offered today. With minimal crane mounting requirements, precious cargo and storage space is conserved. Available for a wide variety of mounting applications, IMT medium-duty telescopic cranes are the perfect complement to our Dominator™ field service vehicles.

IMT Medium-Duty Telescopic Crane Specifications

Model	WS65-5'	WS65-7'	1015	2020	3020
Rating*	6500 ft-lb (.9 tm)	6500 ft-lb (.9 tm)	10,500 ft-lb (1.46 tm)	20,000 ft-lb (2.8 tm)	30,000 ft-lb (4.2 tm)
Horizontal Reach**	5'2" (1.6 m)	7'1" (2.2 m)	15'0" (4.6 m)	20' (6.1 m)	20' (6.1 m)
Vertical Reach**	8'10" (2.7 m)	11'9" (3.6 m)	16'1" (4.9 m)	20'11" (6.4 m)	20'8" (6.3 m)
Rotation	346°	346°	400°	400°	400°
Max. Lift Capacity	2000 lb (907 kg)	2000 lb (907 kg)	3200 lb (1450 kg)	5000 lb (2268 kg)	6000 lb (2722 kg)
Crane Weight***	160 lb (73 kg)	180 lb (82 kg)	660 lb (299 kg)	830 lb (376 kg)	1400 lb (635 kg)

* Maximum crane rating (ft-lb) is defined as the rated load (lb) which when multiplied by its respective distance (ft) from centerline of rotation gives the greatest ft-lb value. ANSI B30.5 crane rating (ft-lb) is the rated load (lb) x the respective distance (ft) from centerline of rotation with all extensions retracted and lower boom in horizontal position.

** From centerline.

*** Short-base option.



Rugged and reliable winches determine how fast a load is handled. IMT's superior winch cycling times allow our winches to move faster, increasing your productivity.

Heavy-Duty Application Telescopic Cranes

Power, Performance And Precision.

When your demands require the handling of heavy loads, look to the industry leader — look to IMT. Our line of heavy-duty application telescopic cranes is designed for the rugged demands found in servicing the railroad, construction and mining markets.

Each model features cylinder holding valves to prevent sudden cylinder collapse, capacity alert systems to prevent boom overload and reliable winches that provide “stop-start” capabilities under load.

IMT heavy-duty telescopic cranes incorporate optional flip sheave designs for positioning loads in confined spaces. Fully proportional, tethered and/or radio remote controls further enhance the precise positioning of loads and overall crane maneuverability.

With each heavy-duty telescopic crane, IMT offers a Dominator field service package that is uniquely designed to fully integrate the chassis,

service body and air system — ensuring maximum reliability and maximum performance.

Whether your work requires the power, performance and precision found in our line of heavy-duty telescopic cranes or the value found in complete systems integration, IMT can provide the product that is right for you.



Systems integration ensures reliable performance while maximizing the productivity of the entire vehicle. Our cranes are designed with an understanding of the total system, since they are often truck-mounted. IMT Dominator field service vehicles provide the ultimate in systems integration.

IMT Heavy-Duty Application Telescopic Crane Specifications

Model	3820	5020	6020	7025
Rating*	38,000 ft-lb (5.3 tm)	50,000 ft-lb (6.9 tm)	60,000 ft-lb (8.3 tm)	70,000 ft-lb (9.7 tm)
Horizontal Reach**	20' (6.1 m)	20' (6.1 m)	20' (6.1 m)	25'4" (7.7 m)
Vertical Reach**	20'8" (6.3 m)	21'11" (6.7 m)	22'4" (6.8 m)	28'4" (8.6 m)
Rotation	400°	400°	400°	450°
Max. Lift Capacity	7500 lb (3402 kg)	8600 lb (3901 kg)	10,400 lb (4717 kg)	14,000 lb (6350 kg)
Crane Weight***	1400 lb (635 kg)	1625 lb (737 kg)	1790 lb (812 kg)	3200 lb (1452 kg)

* Maximum crane rating (ft-lb) is defined as the rated load (lb) which when multiplied by its respective distance (ft) from centerline of rotation gives the greatest ft-lb value.
ANSI B30.5 crane rating (ft-lb) is the rated load (lb) x the respective distance (ft) from centerline of rotation with all extensions retracted and lower boom in horizontal position.
** From centerline.
*** Short-base option.

IMT Telescopic Cranes

Reliable, Efficient
And Compact.

IMT telescopic cranes provide the lifting capacities, winch speeds and precise handling required for a variety of applications. IMT offers a complete line of cranes with maximum lifting capacities of 920 lb (417 kg) to 14,000 lb (6350 kg). All units are compact, requiring minimal mounting space, and feature impressive cycle times for maximum productivity. Our full line of telescopic cranes meet stringent ANSI B30.5 industry standards.

Selected models are available in both PTO-driven hydraulic or 12-VDC power. All IMT telescopic cranes feature anti two-block protection, capacity shutdown systems, cylinder holding valves and tethered remote controls. PTO-driven hydraulic models can also be equipped with fully proportional radio remote controls.

Each crane is painted prior to assembly with DuPont Imron® 5000 for outstanding finish luster and durability. When you need reliable telescopic cranes for your application, choose IMT.



Standard wired and optional radio remote control with fine metering and instant response make crane operation convenient. IMT remote controls are ideal for precise maneuvering and total load visibility.

